

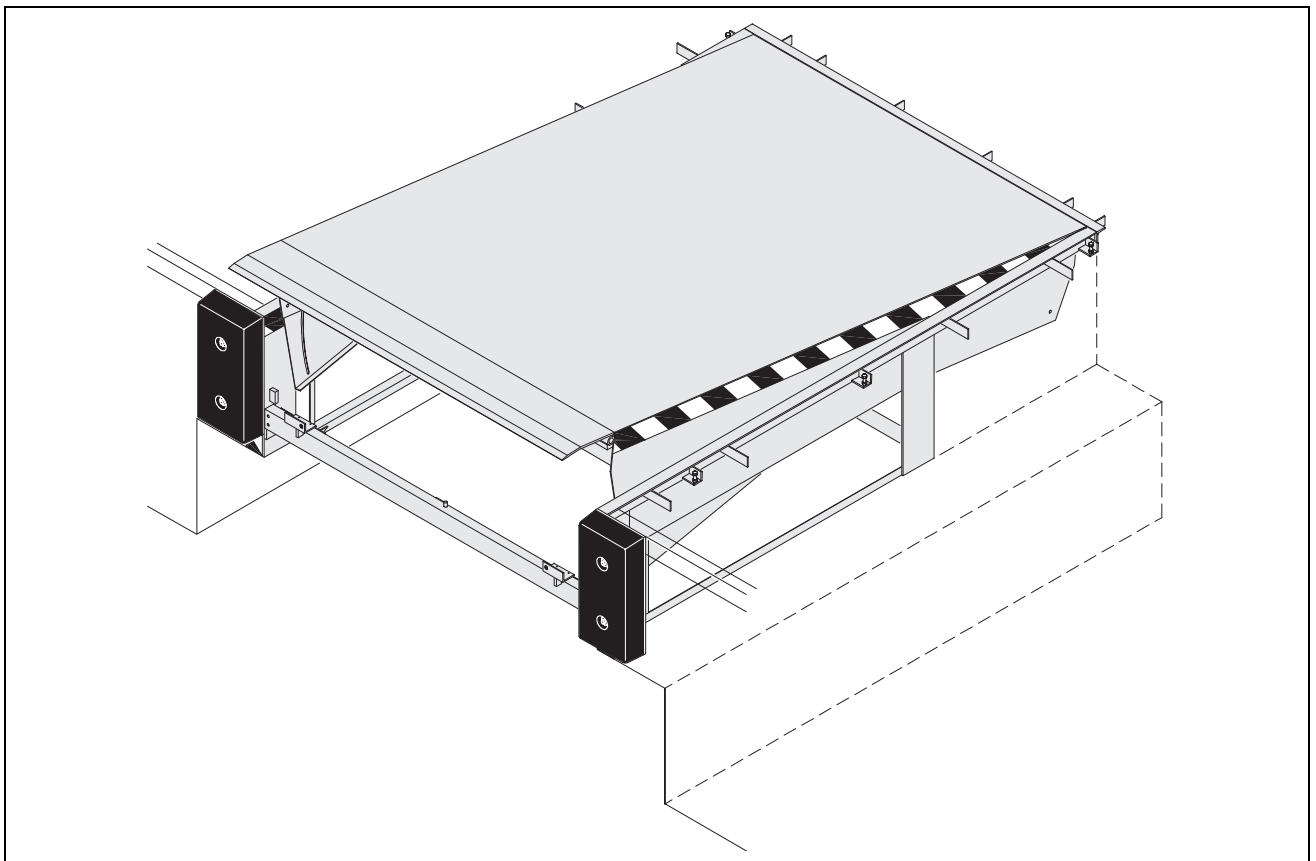
Product data sheet

Crawford
610 Swingdock

Hydraulic dock leveller with swing lip

Serial no.: A2020130

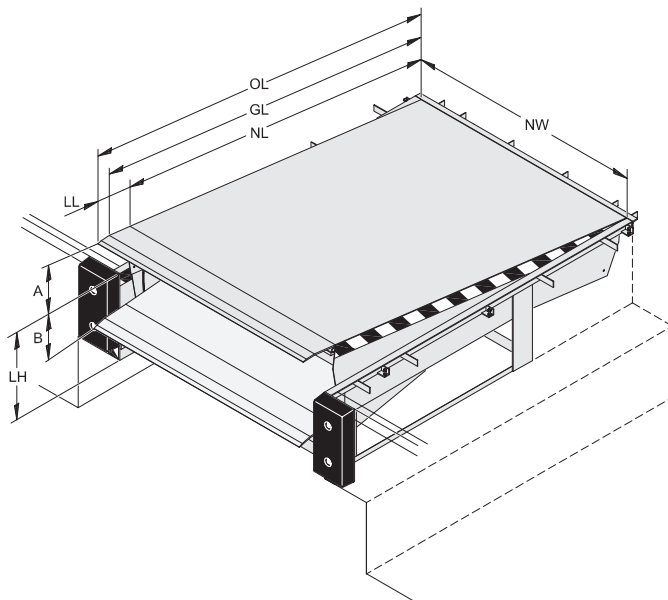
Load capacity: see specification plate



Stationary Dock Leveller with Swing Lip

The stationary dock leveller with swing lip incorporates the most recent developments in our proven range of hydraulic swing lip levellers. The electro-hydraulic version is easily operated. Once the vehicle has docked the leveller is easily positioned by the touch of a single button. By keeping the button depressed the platform will fully rise and the lip will automatically swing out, then by releasing the button the leveller will slowly lower until the lip comes to rest on the vehicle bed, the leveller then adjusts automatically to the varying heights of the vehicle, as goods are loaded and unloaded.

The stationary dock leveller can be supplied in a range of integrated frames designed to best suit the application, whichever option is selected the benefits associated with this type of design, such as consistent clearance between leveller frame and platform and ease of installation can be enjoyed. The rated load capacity allows for the most unfavourable application of that load under normal use. The new features of this leveller ensure it complies with the new European EN 1398 standard.



- NL Nominal length
- NW Nominal width
- OL Overall length [NL + 330]
- GL Gradient length [NL + 190]
- LL Lip length
- LH Leveller height
- A Level equalisation above dock
- B Level equalisation below dock

According to EN 1398 the dock leveller is not allowed to be operated outside the permissible gradient range of $\pm 12.5\%$ (approx. $\pm 7^\circ$). The gradient range may only be exceeded if the operator ensures that the danger of slipping has been eliminated (for example due to dry and clean surfaces).

Dock leveller		Steel lip, aluminium lip			
		LL400		LL500	
NL	LH	A	B	A	B
1750	700	250	350	130	370
2000	600	250	290	-	-
	700	290	340	190	360
2500	600	310	270	-	-
	700	360	330	270	340
3000	600	360	270	-	-
	700	430	330	320	330
3500	800	520	350	410	360
4000	900	570	350	450	360
4500	900	620	350	360	510

Nominal width (NW) 1750, 2000, 2200 for all sizes

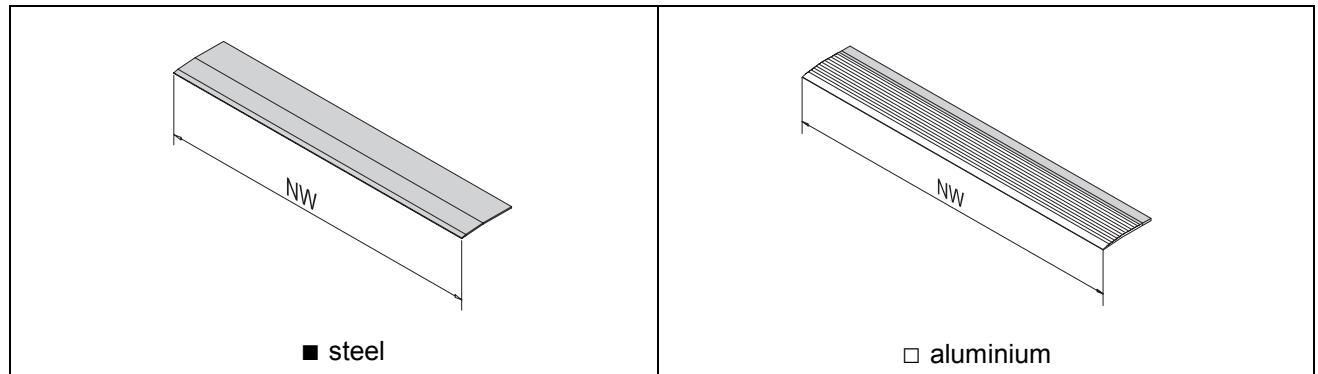
All sizes in mm.

Load capacity for all sizes: 60 kN

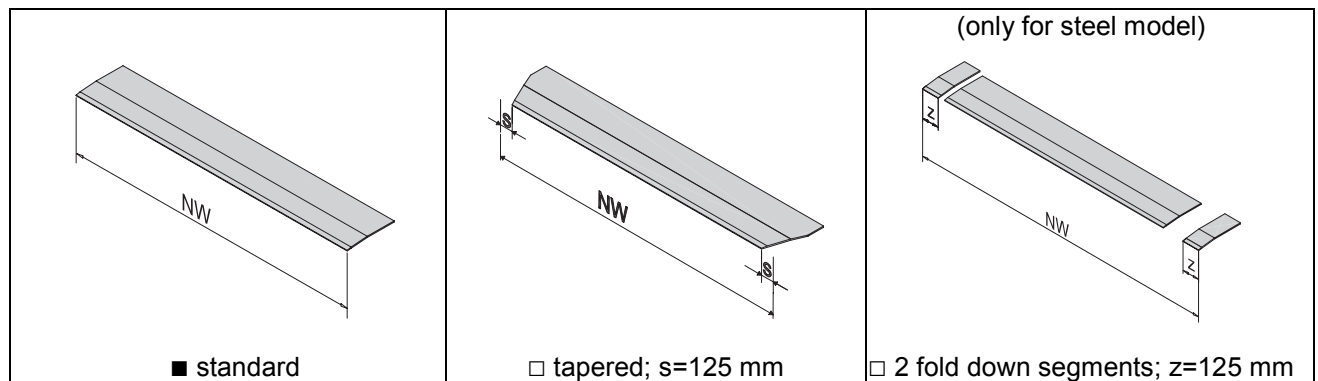
OPTIONS

<p>Frames – connection to building</p> <p>T-Frame [standard] <input checked="" type="checkbox"/></p> <p>W-Frame [frame for welding] <input type="checkbox"/></p> <p>F-Frame [flat frame for welding] <input type="checkbox"/></p> <p>B-Frame [box frame] <input type="checkbox"/></p> <p>P-Frame [pit frame, max. NL=3000] <input type="checkbox"/></p> <p>Surface</p> <p>Standard colour RAL 5010 <input checked="" type="checkbox"/></p> <p>Off standard colour RAL XXXX <input type="checkbox"/></p> <p>Hot galvanized <input type="checkbox"/></p> <p>Hydraulic Equipment</p> <p>Low noise hydraulic unit <input checked="" type="checkbox"/></p> <p>Three hydraulic cylinders <input checked="" type="checkbox"/></p> <p>Low temperature oil <input type="checkbox"/></p> <p>“BIO” oil (Environment) <input type="checkbox"/></p>	<p>Lip options</p> <p>Lip length 400 mm <input checked="" type="checkbox"/></p> <p>Lip length 500 mm [only with LH 700] <input type="checkbox"/></p> <p>Steel lip bevelled, 100 mm <input type="checkbox"/></p> <p>Steel lip bent <input checked="" type="checkbox"/></p> <p>Steel lip straight <input type="checkbox"/></p> <p>Energy & Ergonomics</p> <p>EPDM seal <input type="checkbox"/></p> <p>Slip Protection / Noise Reduction <input type="checkbox"/></p> <p>40 platform insulation <input type="checkbox"/></p>
---	--

Swing lip material



Lip options

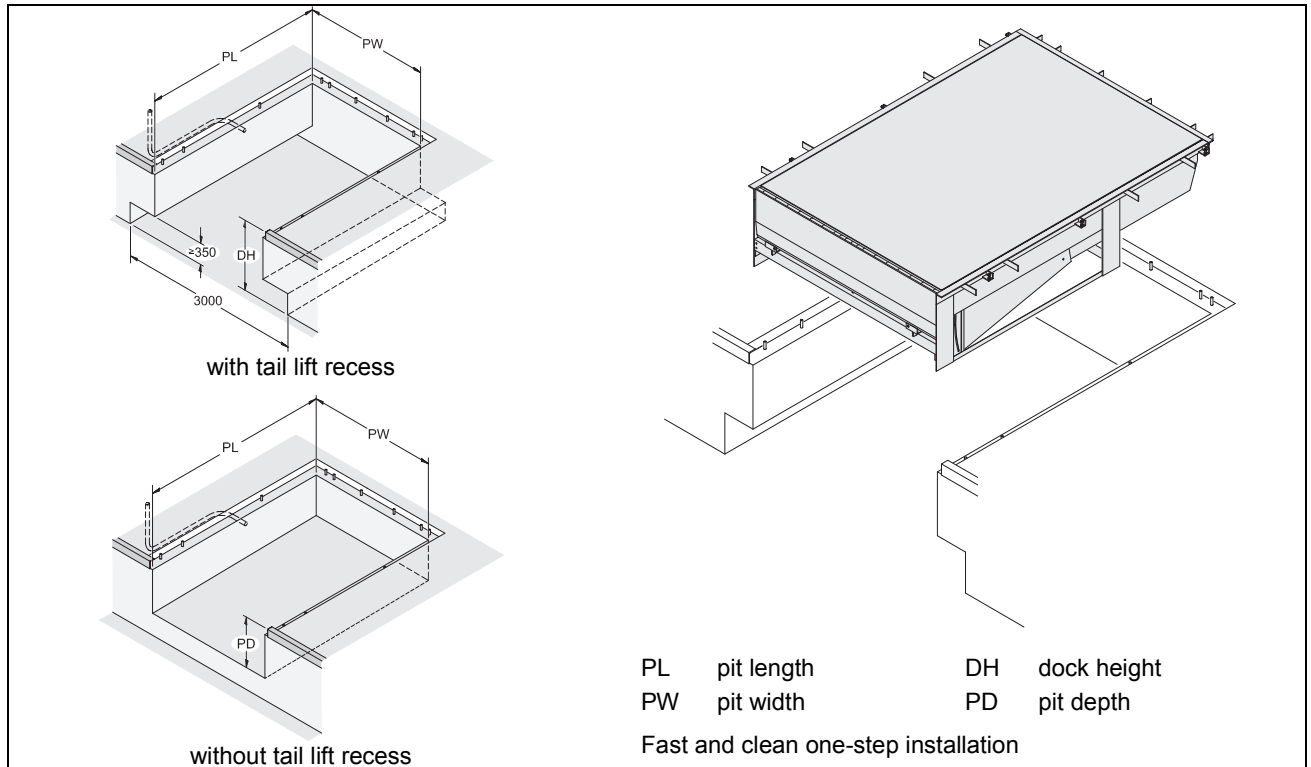


Drawings show steel model.

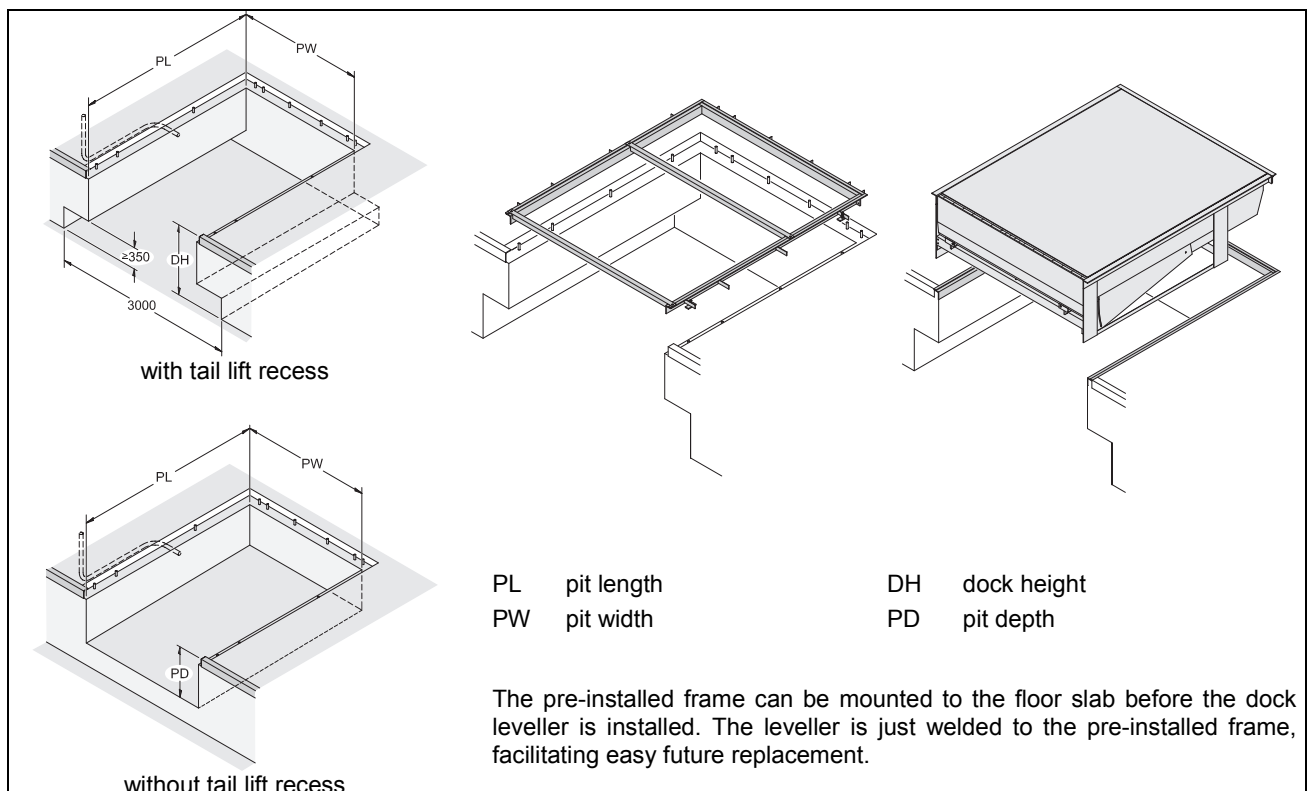
= standard = option

Pits

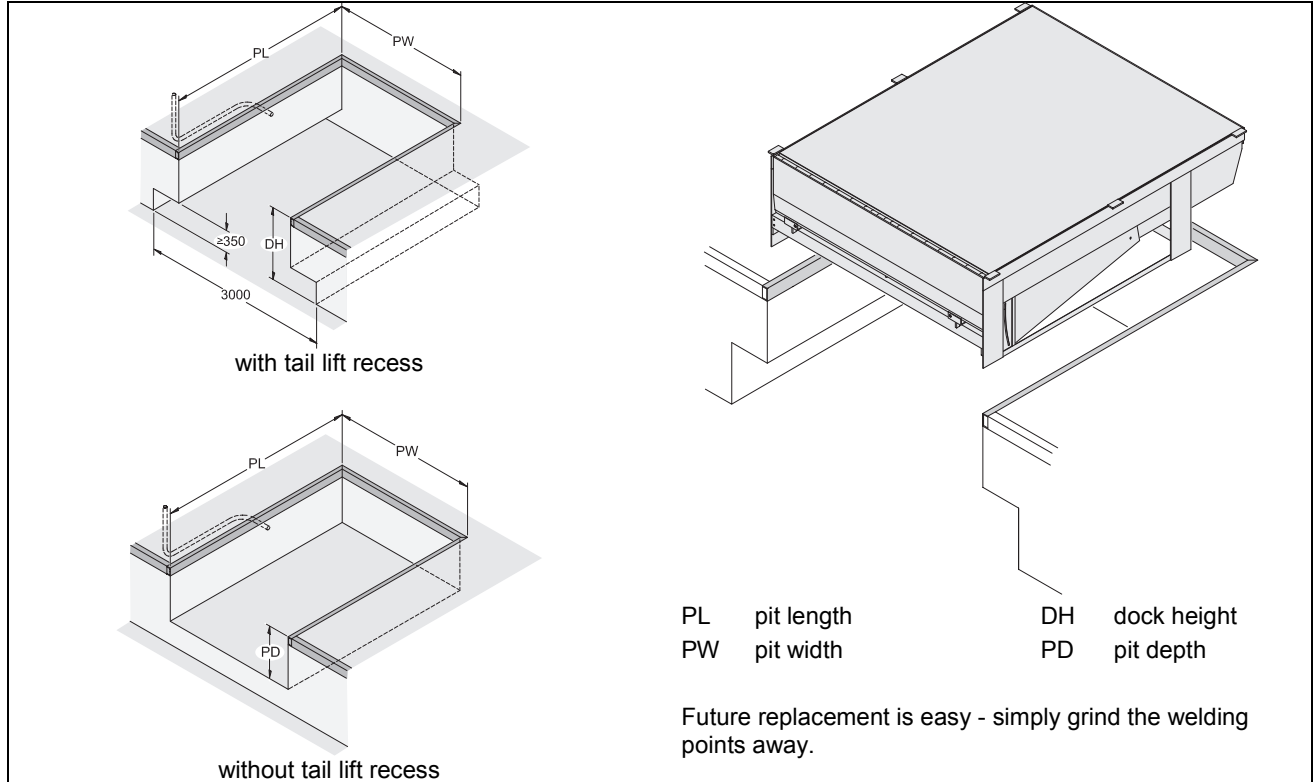
T [leveller frame for embedding in concrete] Drawing 5143.0175 / 5143.0184



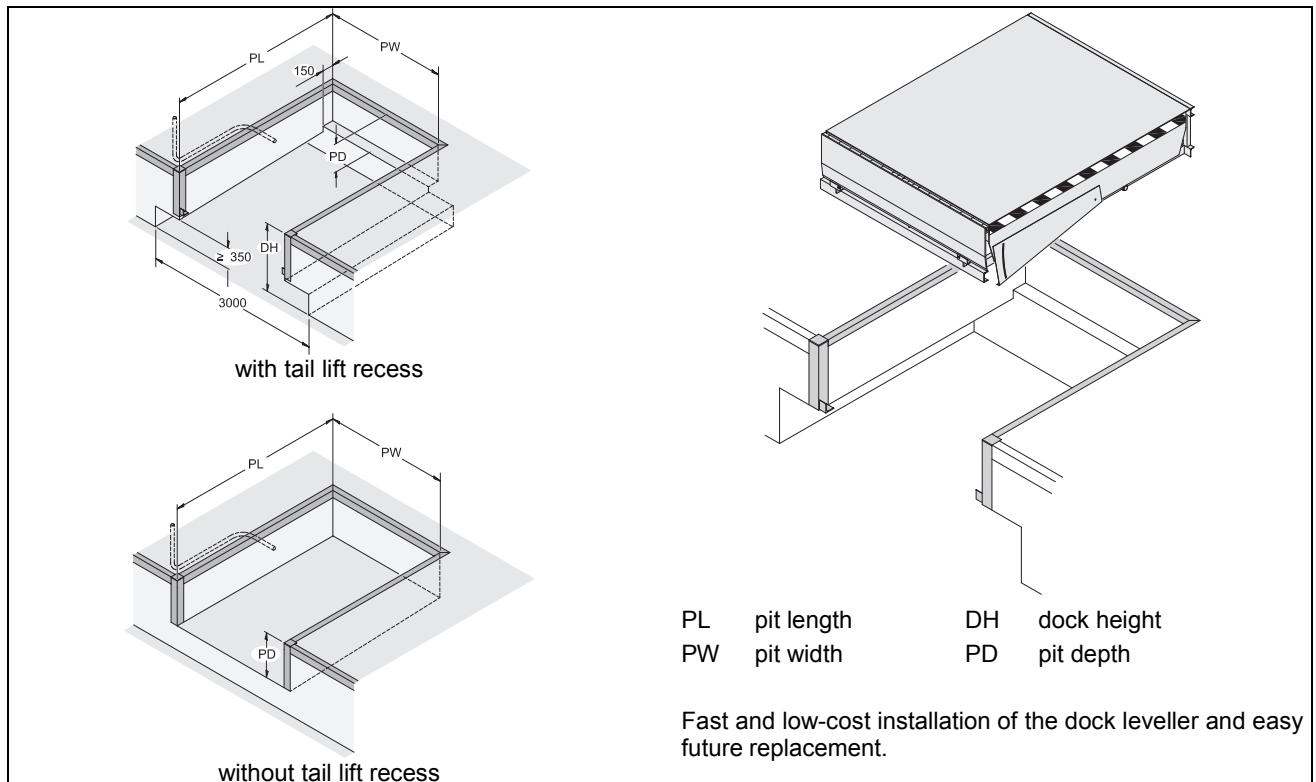
W [leveller frame for welding] Drawing 5143.0175 / 5143.0184



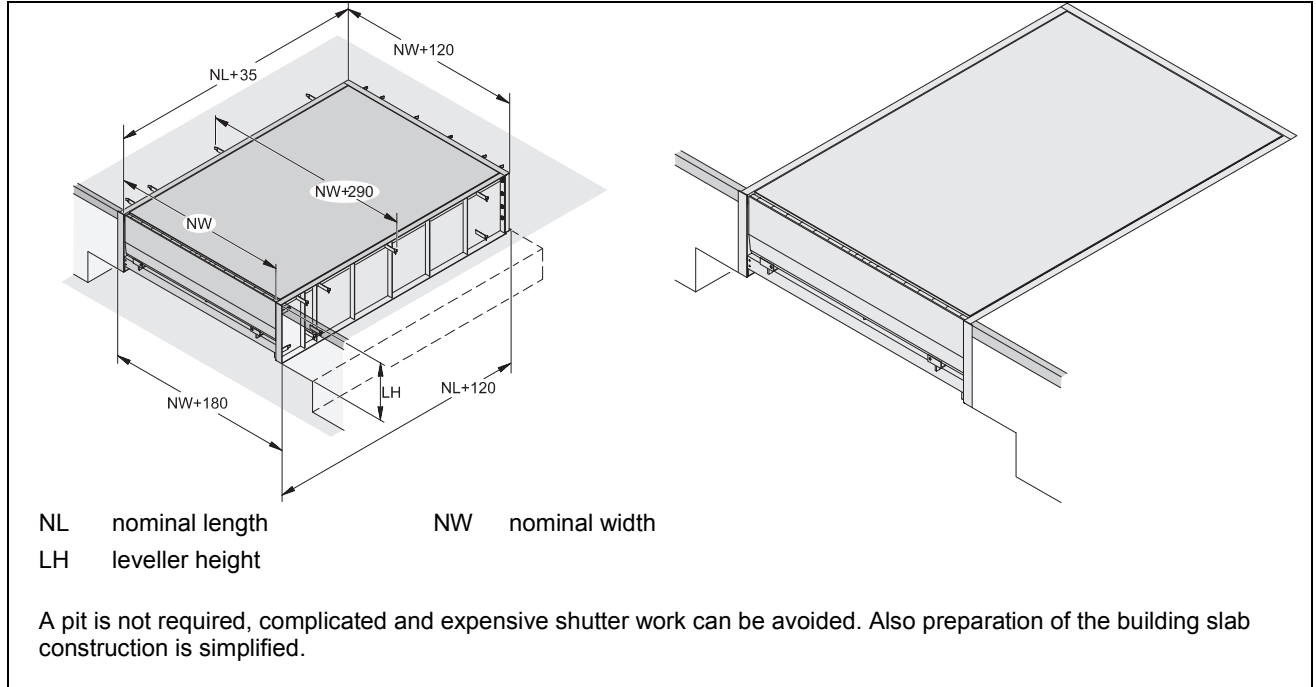
F [flat frame for welding] Drawing 5143.0177 / 5143.0186



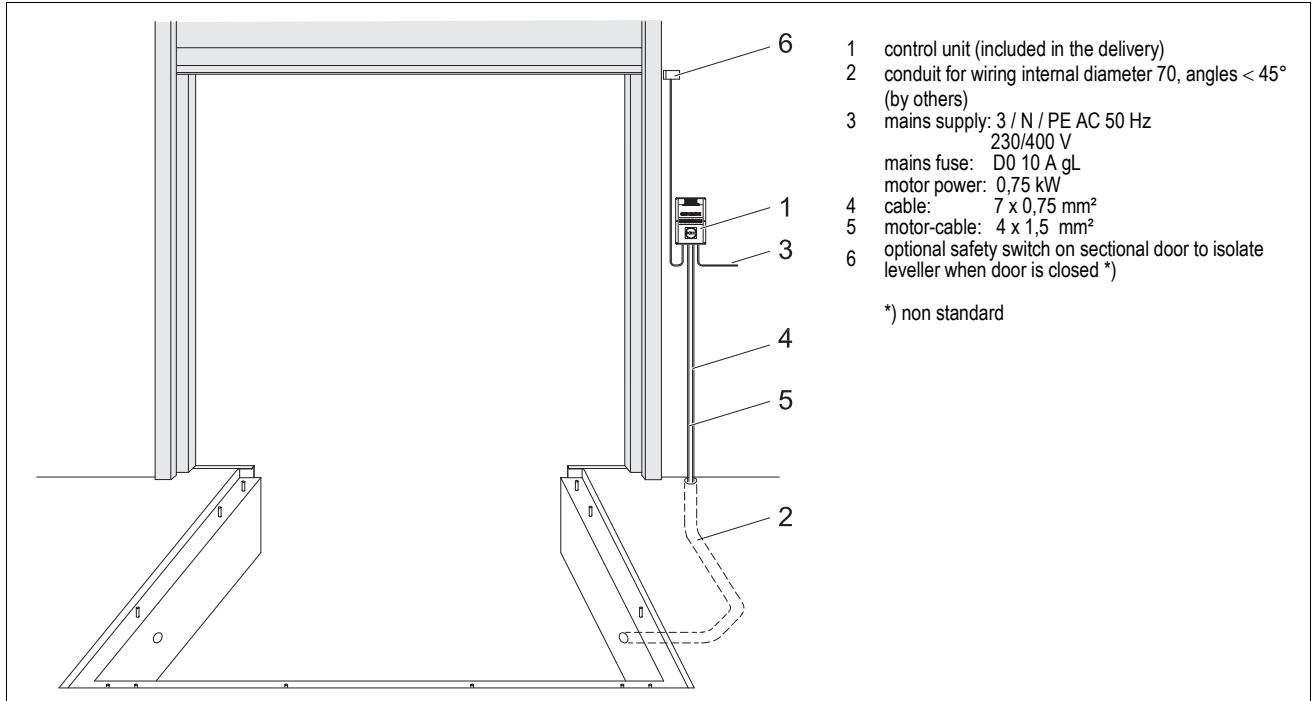
P [pit frame for welding] Drawing 5143.0180 / 5143.0185



B [box-frame]



Electrical preparations



Standard Buffer			
Buffer, model RS	Buffer, model RB	Buffer, model RB1,5	
<p>1 plate (galvanized) 2 buffer 400x80x70 Art.-no.: R0060139</p>	<p>1 plate (galvanized) 2 buffer 500x250x90 Art.-no.: R0060104</p> <p>1 plate (galvanized) 2 buffer 500x250x140 Art.-no.: R0060103</p>	<p>1 box (galvanized) 2 buffer 500x250x90 3 buffer 250x250xD</p> <p>left D = 90 Art.-no.: R0060136</p> <p>D=140 Art.-no.: R0060151</p> <p>right D=90 Art.-no.: R0060137</p> <p>D=140 Art.-no.: R0060152</p>	
Reinforced Buffer			
Buffer protection plate for model RB	Buffer, model RB with sloping box	Steel Spring Buffer	
<p>plate (galvanized) 485x235x15 D=140 Art.-no.: 0R060173 D=90 Art.-no.: 0R060172</p> <p>plate (galvanized) 485x235x15 D=140 Art.-no.: 0R060175 D=90 Art.-no.: 0R060174</p>	<p>1 box (galvanized) 2 buffer 500x250x90 Art.-no.: R0060170</p> <p>1 box (galvanized) 2 buffer 500x250x140 Art.-no.: R0060170</p>	<p>1 plate (galvanized) 2 steel spring 3 buffer ø130x125 Art.-no: R0060177</p> <p>Hx160x150 H=600 or 800</p>	
Special Buffer			
Height-adjustable Buffer, model EBH	Floating Buffer, model EBF		
<p>Art.-no.: R0060134 D=90 or D=140</p> <p>Option: Steel Spring Buffer 600x160x220 1 plate (galvanized) 2 steel spring 3 buffer ø 130x125</p>	<p>Art.-no.: R0060135 D=90 or D=140</p>		

All sizes in mm [HxBxD].

We reserve the right to alter technical specifications.