

Crawford  
672 Inflatable shelter SIE

Product datasheet



Q1.0 - 2009

# Copyright and Disclaimer Notice

Although the contents of this publication have been compiled with the greatest possible care, ASSA ABLOY Entrance Systems cannot accept liability for any damage that might arise from errors or omissions in this publication. We also reserve the right to make appropriate technical modifications/replacements without prior notice.

No rights can be derived from the contents of this document.

Color guides: Color differences may occur due to different printing and publication methods.

ASSA ABLOY, Crawford, Megadoor and hafa, as words and logos, are examples of trademarks owned by ASSA ABLOY Entrance Systems or companies within the ASSA ABLOY Group.

Copyright © ASSA ABLOY Entrance Systems 2006-2012

No part of this publication may be copied or published by means of scanning, printing, photocopying, microfilm or any other process whatsoever without prior permission in writing by ASSA ABLOY Entrance Systems.

All rights reserved



# Technical facts

## Features

Sizes - nominal height	3775, 3925, 4375 mm
Sizes - nominal width	3250, 3550 mm
Sizes - nominal depth	1080 mm
Sizes - side bag extension	350 mm (standard for NW=3250) "S" 500 mm (standard for NW=3550) "L"
Sizes - top bag extension	800, 900 mm
Front plate	RAL 9010 or RAL 9005
Control unit	Switch control

## Performance

Roof:	Sheet plate, RAL 9005 black
Front plate:	Steel sheet galvanized
Fabric quality:	Top and side bag chloroprene coated polyamide fabric 410 g/m <sup>2</sup> , thickness 0,5 mm
Fan:	230V, 50 Hz, 1,8A 400V, 50 Hz, 1,8A Noise niveau: 75dBa in working position
Temperature:	-30° to + 70°

# Contents

Copyright and Disclaimer Notice .....	2
Technical facts .....	3
Contents .....	4
<b>1 Description .....</b>	<b>5</b>
1.1 Application .....	5
1.2 Mode of operation .....	5
1.3 Overview .....	5
1.4 Standard .....	5
1.5 Options .....	5
<b>2 Specifications .....</b>	<b>6</b>
2.1 Dimensions .....	6
2.2 Material .....	6
<b>3 Construction .....</b>	<b>7</b>
3.1 Construction views .....	7
<b>4 Building and space requirements .....</b>	<b>8</b>
4.1 Wall fixings .....	8
4.1.1 Concrete wall .....	8
4.1.2 Steel wall .....	8
4.2 Fixing points .....	9
<b>5 Service .....</b>	<b>10</b>
Index .....	12



# 1 Description

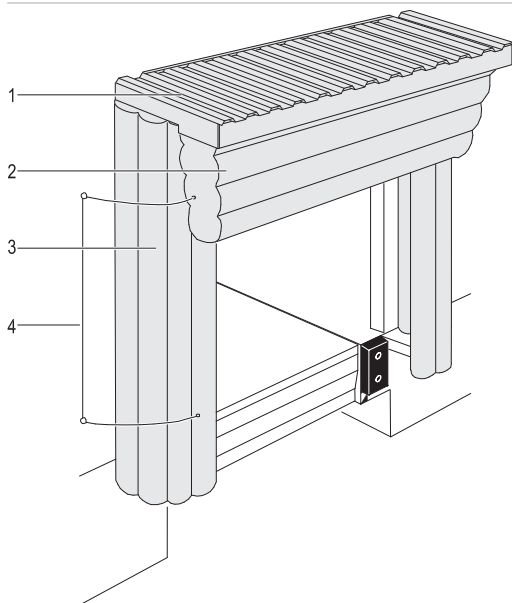
## 1.1 Application

The handling of cooled or frozen food put high demands on the temperature chain, the inflatable shelter is a key component of a preferred loading bay design. The unique feature of the Crawford 672 Inflatable shelter SIE is the long life time rubber coated fabric of the airbags, which facilitates very flexible sealing of the vehicle movements during loading and unloading. The simple design of the seal is outstanding, only consisting of a roof part with fixings and the sealing airbags. It has no wall construction around the side bags that can be damaged by the loading vehicles during dock-in manoeuvring, and when the Crawford 672 Inflatable shelter SIE is deflated the side bags and the top bag are well protected.

## 1.2 Mode of operation

The truck is not driven into the shelter as usual but only after docking the Crawford 672 Inflatable shelter SIE will be inflated and put tightly around the coachwork. Due to this principle a unique adaptation to the most different kind of trucks can be obtained. The inflatable cushions being connected with each other are blown up and kept steadily under pressure during usage by a powerful but quiet blower. After loading is completed within seconds the side cushions are pulled aside automatically by tensioning ropes or counterweights and the top cushion is pulled up by a counterweight running on a shaft.

## 1.3 Overview



- 1 Trapezoidal plate
- 2 Top bag
- 3 Side bag
- 4 Tensioning rope

## 1.4 Standard

Nominal height	3775, 3925, 4375 mm	
Nominal width	3250, 3550 mm	
Nominal depth	1080 mm	
Top bag extension	800 mm	
Side bag extension	350 mm (standard for NW=3250) "S" 500 mm (standard for NW=3550) "L"	
Operating	Switch control	
Standard colour	Front plate	RAL 9010

## 1.5 Options

Top bag extension	1100 mm	
Colour	Front plate	RAL 9005
	Side brackets	
Front plate	Digit on front plate	
Side bag retraction	Counterweight with channel	
Wall fixings	Concrete, steel, insulated panel, light concrete, Load House	

## 2 Specifications

### 2.1 Dimensions

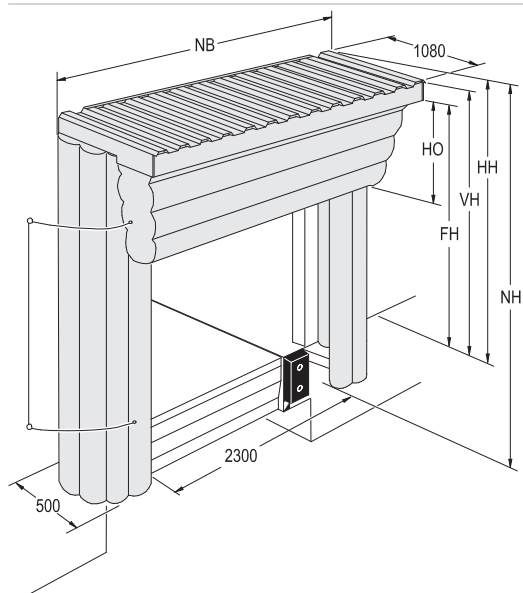


Abb.	Dimension	Value (mm)
NB	Nominal width	3250, 3550, 4375
NH	Nominal height	3775, 3925
NT	Nominal depth	1080
HO	Top bag travel	800, 1100
HS	Side bag travel	350 (NW=3250) "S" 350 (NW=3550) "L"

### 2.2 Material

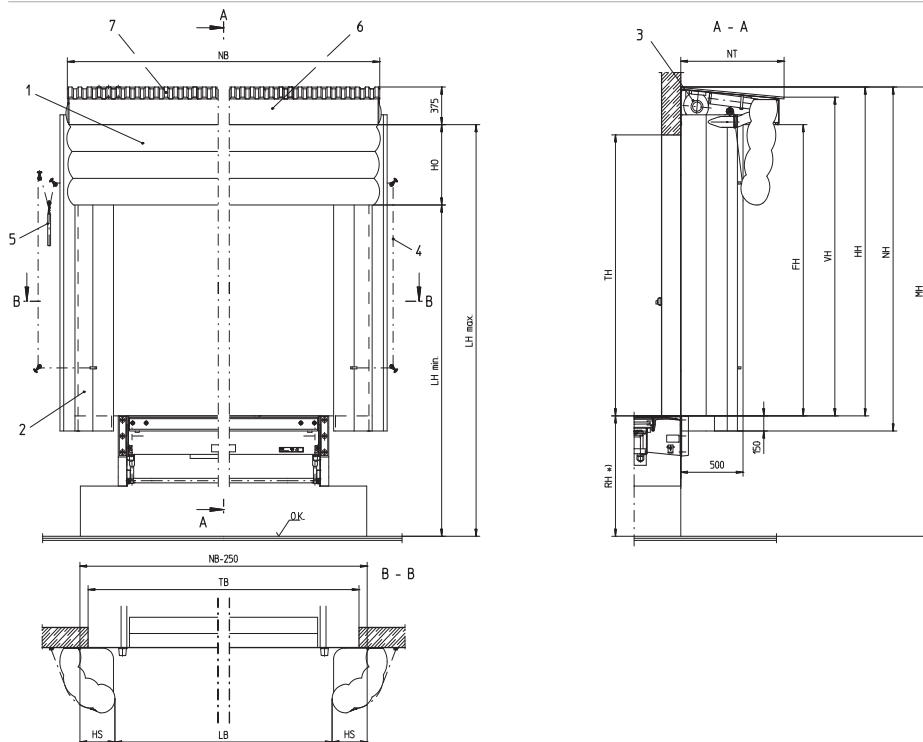
The cushions are made up of a durable material with fabric inlay. The material is inflammable, light-proof, weather and wear resistant.



# 3 Construction

The Crawford 672 Inflatable shelter SIE can be fitted directly to the wall or on a Load House and is available as a single module or multiple modules. The Crawford 672 Inflatable shelter SIE consists of two side walls with bags one side wall for multiple module), front protections and installation material. Roof with top bag, front plate, machinery, fan and installation brackets. The Crawford 672 Inflatable shelter SIE is operated from a control panel and the supply contains the complete dock shelter including necessary fixings.

## 3.1 Construction views

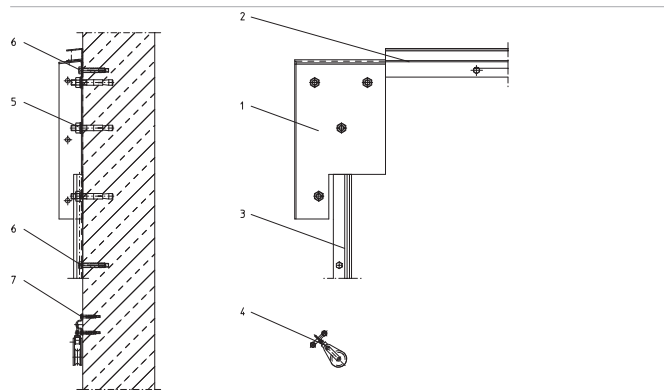


- 1 Top bag
- 2 Side bag
- 3 Blower
- 4 Tensioning rope
- 5 Counter weight
- 6 Front plate
- 7 Trapezoidal plate
- OK Yard level
- TB Door width
- NH Nominal height
- RH Dock height
- LB Clear width
- LH Clear height above yard level
- HH Total height bag above dock height
- VH Total height front above dock height
- NB Nominal width
- FH max. free height above dock level
- HO Travel top bag
- MH Installation height

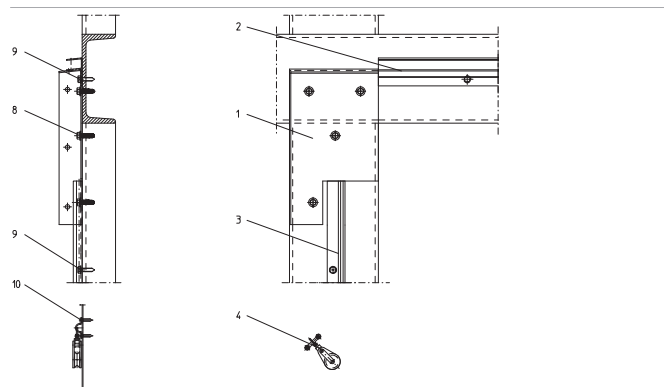
# 4 Building and space requirements

## 4.1 Wall fixings

### 4.1.1 Concrete wall



### 4.1.2 Steel wall



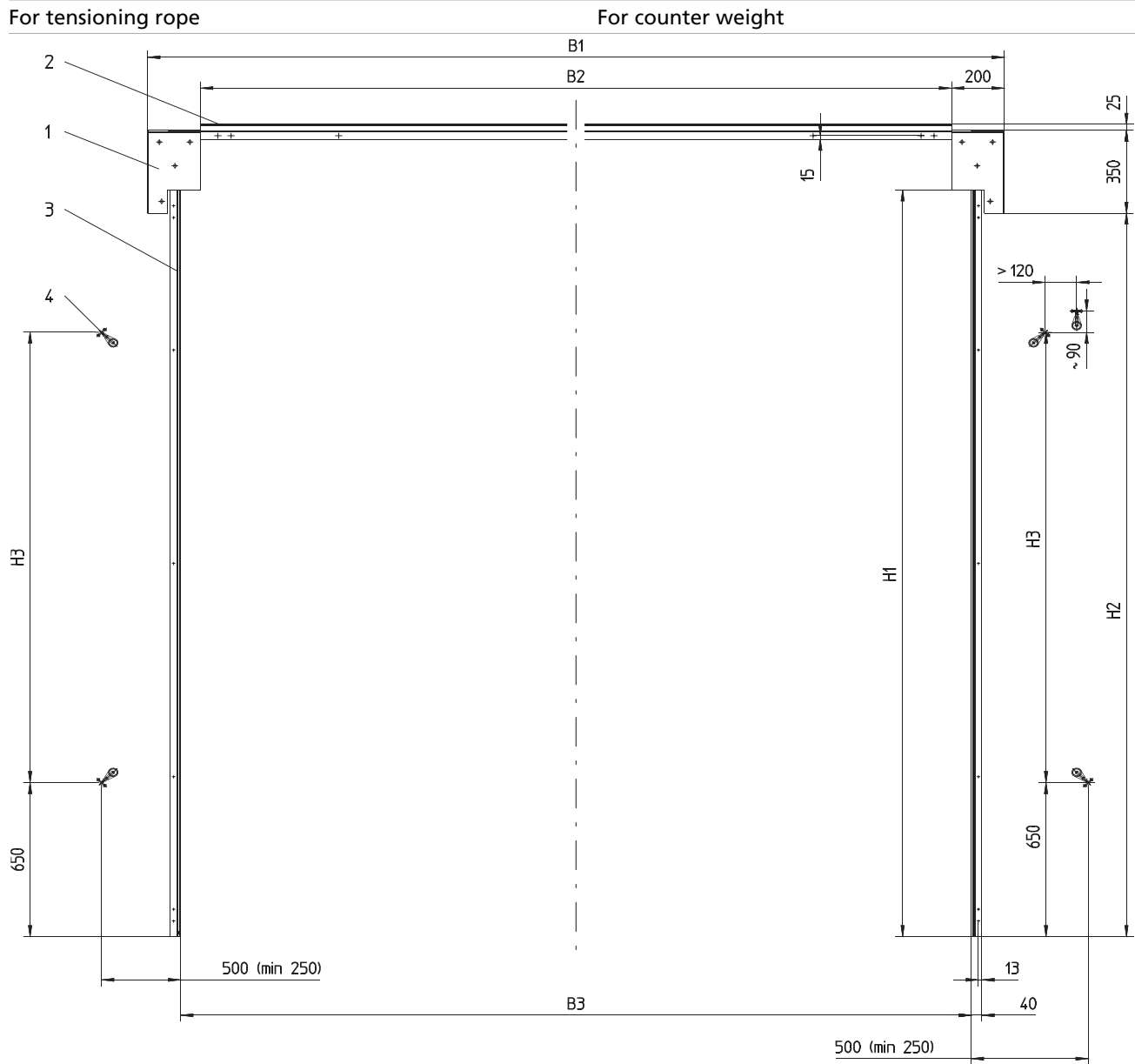
1	Console
2	F-profile top
3	C-profile side
4	Block pulley for tension rope
5	Heavy duty bolt Ø 12
6	Dowel with slotted round head wood screw 8x60
7	Dowel with slotted round head wood screw 4x40
8	Self drilling screw with washer 9,5x32
9	Self tapping screw with washer 8x32
10	Self tapping screw 5.5x25

Note!

The wall surface at the installation point, NH + 150 mm und NB + 100 mm, should be smooth and flat!



## 4.2 Fixing points



- X1 Console
- X2 F-profile top
- X3 C-profile side
- X4 Block pulley for tensioning rope
- NB Nominal width
- NH Nominal height

NH	H1	H2	H3
3775	3500	3402	2250
3925	3650	3552	2400
4375	4100	4152	3000
NB	B1	B2	B3
3250	3250	2850	3000
3550	3550	3150	3300

## 5 Service



### These keys open doors to better business

Regardless of their function, age or manufacturer, your industrial doors and dock loading systems have an important role in the flow of your business. That's why it makes sense to plan their maintenance long before the need for service occurs.

A Key Customer Service agreement from Crawford is your best assurance of safe and trouble-free door and dock operation. By becoming a key customer, you not only reduce the risk of breakdowns, but also guarantee compliance with local regulations and the new harmonised EU standards. You also ensure that your doors and dock loading systems retain their classifications for wind load, air permeability, water penetration and more.

Four types of Key Customer Service agreement – Green, Yellow, Blue and Red – allow us to tailor our service to your specific needs. Based on the role of your doors and dock loading systems, and the intensity with which you use them, you receive service that provides the perfect balance of economy, safety and security.

Best of all, the maintenance is performed by Crawford's renowned team of service technicians. As a qualified specialist in industrial doors and dock loading systems, we have the knowledge and skills to service any door or dock, regardless of its type, age or manufacturer. With Crawford as a single source for all your door and docking equipment brands, you can easily reduce costs while increasing equipment availability.

# Index

## A

Application .....5

## B

Building and space requirements 8

## C

Concrete wall .....8

Construction .....7

Construction views .....7

Copyright and Disclaimer Notice .2

## D

Description .....5

Dimensions .....6

## F

Features .....3

Fixing points .....9

## M

Material .....6

Mode of operation .....5

## O

Options .....5

Overview .....5

## P

Performance .....3

## S

Service .....10

Specifications .....6

Standard .....5

Steel wall .....8

## T

Technical facts .....3

## W

Wall fixings .....8

Crawford is a leading ASSA ABLOY brand focusing on automated entrance solutions for efficient movement of vehicles and goods. With a complete portfolio of door and docking solutions, an extensive service offer and professional advice, we help customers ensure convenient, safe, secure and energy saving operations around-the-clock.

Crawford is represented in more than 30 countries and is part of ASSA ABLOY Entrance Systems, which also includes the globally recognized Megadoor and Besam brands.