



Copyright and Disclaimer Notice

Although the contents of this publication have been compiled with the greatest possible care, Crawford cannot accept liability for any damage that might arise from errors or omissions in this publication. We reserve the right to make appropriate technical modifications/replacements without prior notice.
No rights can be derived from the contents of this document.

Colour guides: Colour differences may occur due to different printing methods.

Crawford®, Megadoor®, hafa®, EconoRoll®, MobiGuard® and MobiOpener® are registered trademarks owned by The Cardo Group

Copyright © 2006-2008 Crawford

No part of this publication may be copied or published by means of printing, photocopying, microfilm or any other process whatsoever without prior permission in writing by Crawford.

All rights reserved



Technical facts

1.1 Features

Sizes – nominal height	3200, 3400, 3600 mm
Sizes – nominal width	3250, 3450 mm
Sizes - nominal depth	600, 900 mm
Sizes – top curtain	1000, 1200 mm
Sizes – side curtain	600, 700 mm
Curtain colour	black
Parking guides	white, yellow
Wall fixings	concrete, sandwich, light concrete, Load house, cavity, insulated panel

1.2 Performance

1.2.1 Top and side curtains

double layer high quality polyester	
thickness:	3,0 mm
coating:	front and back
weight:	approx. 3400g/m ²
flammability:	DIN 75200
tensile strength:	DIN 53354 <ul style="list-style-type: none"> • longitudinal strength: approx. 7000 N/5cm • transverse strength: approx. 5000 N/5cm
tear elongation:	DIN 53363 <ul style="list-style-type: none"> • longitudinal strength: approx. 750 N • transverse strength: approx. 900 N

1.2.2 Continuous roof cover

one layer high quality polyester	
thickness:	0,5 mm
coating:	front and back
total weight:	approx. 600 g/m ²
flammability:	DIN 75200
tensile strength:	DIN 53354 <ul style="list-style-type: none"> • longitudinal strength: approx. 2800 N/5cm • transverse strength: approx. 2600 N/5cm
tear elongation:	DIN 53363 <ul style="list-style-type: none"> • longitudinal strength: approx. 250 N • transverse strength: approx. 250 N

Contents

Copyright and Disclaimer Notice.....	ii
<hr/>	
Technical facts.....	iii
<hr/>	
1.1 Features.....	iii
1.2 Performance.....	iii
1.2.1 Top and side curtains.....	iii
1.2.2 Continuous roof cover.....	iii
2. Description.....	5
<hr/>	
2.1 Application.....	5
2.2 Mode of operation.....	5
2.3 Overview.....	5
2.4 Standard.....	5
2.5 Options.....	5
2.6 Description of available options.....	6
3. Specifications.....	7
<hr/>	
3.1 Dimensions.....	7
4. Construction.....	8
<hr/>	
5. Building and space requirements.....	9
<hr/>	
5.1 Fixing points.....	9
5.2 Wall fixings.....	10
5.2.1 Cavity wall.....	10
5.2.2 Concrete wall.....	10
5.2.3 Insulated wall.....	10
6. Service.....	11
<hr/>	
These keys open doors to better business.....	11
7. Index.....	12
<hr/>	



2. Description

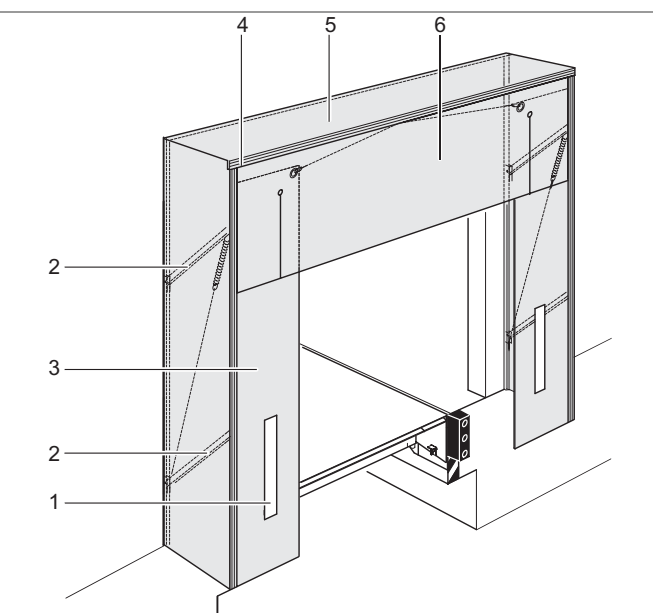
2.1 Application

The Crawford 660 curtain shelter SME is the standard solution for energy saving oriented operators. The vehicle reverses into the dock shelter which seals it off with flexible side and top curtains, giving weather protection during the loading and unloading process. The result is an improved working environment and goods protection. The curtain material has a very high wear and tear resistance. The Crawford curtain dock shelter is designed for wall installation and standard single Load houses.

2.2 Mode of operation

The sides and the roof push back under impact when vehicles dock inaccurately, whereby the roof rises automatically. Damages to vehicles and to the shelter are virtually eliminated. The front frame holds the curtain material which has a double woven textile reinforcement. The top curtain has a slit in the main wear area. At small additional cost the top curtain is partly splitted with a double overlapping layer of material. The dock shelter supply includes for all fixing materials and sealant.

2.3 Overview



- 1 White parking guides
- 2 Bracing arms
- 3 Side curtains
- 4 Extruded aluminium section
- 5 Continuous roof cover
- 6 Split top curtain

2.4 Standard

Nominal height	3200, 3400, 3600 mm
Nominal width	3250, 3450 mm
Side curtain	600 mm for NB = 3250 mm 700 mm for NB = 3450 mm
Top curtain	1000 mm
Nominal depth	600 mm
Curtain colour and material	black PVC fabric
Parking guides	white

2.5 Options

Nominal depth	900 mm
Top part	rain channel
Top curtain	1000 mm splitted 1200 mm standard 1200 mm splitted digit on top curtain
Side curtain	reinforced rubber flaps placed left and right in lower corners behind the front curtain. notching on both sides
Parking guides	yellow
Wall fixings	concrete sandwich cavity insulated panel Load house
Corner seals	triangle or round cushions in lower corners of the dock shelter.

Q1.0 - 2009

2.6 Description of available options

Standard options for improved working conditions and less draught into the building.

A Rain Channel

The unique channel is integrated in the middle of the roof part.

- Controlled water drainage
- The water is led out left and right, not into the loading area

B Splitted top curtain

4 slits with double overlapping layer of PVC curtain material in the main wear area.

- Flexible coverage of rear top corners of docked vehicle for best sealing
- Less draught into the building

C Digit on top curtain

300 mm high letters or numbers printed in the middle of the top curtain.

- Individual customised marking of loading bays

D Reinforced rubber flaps

Robust rubber flap placed left and right in lower corners behind the front curtain

- Increased pressure on the docked vehicle body for best sealing
- Improved stability for the complete dock shelter in windy area
- Less draught into the building

E Corner seals

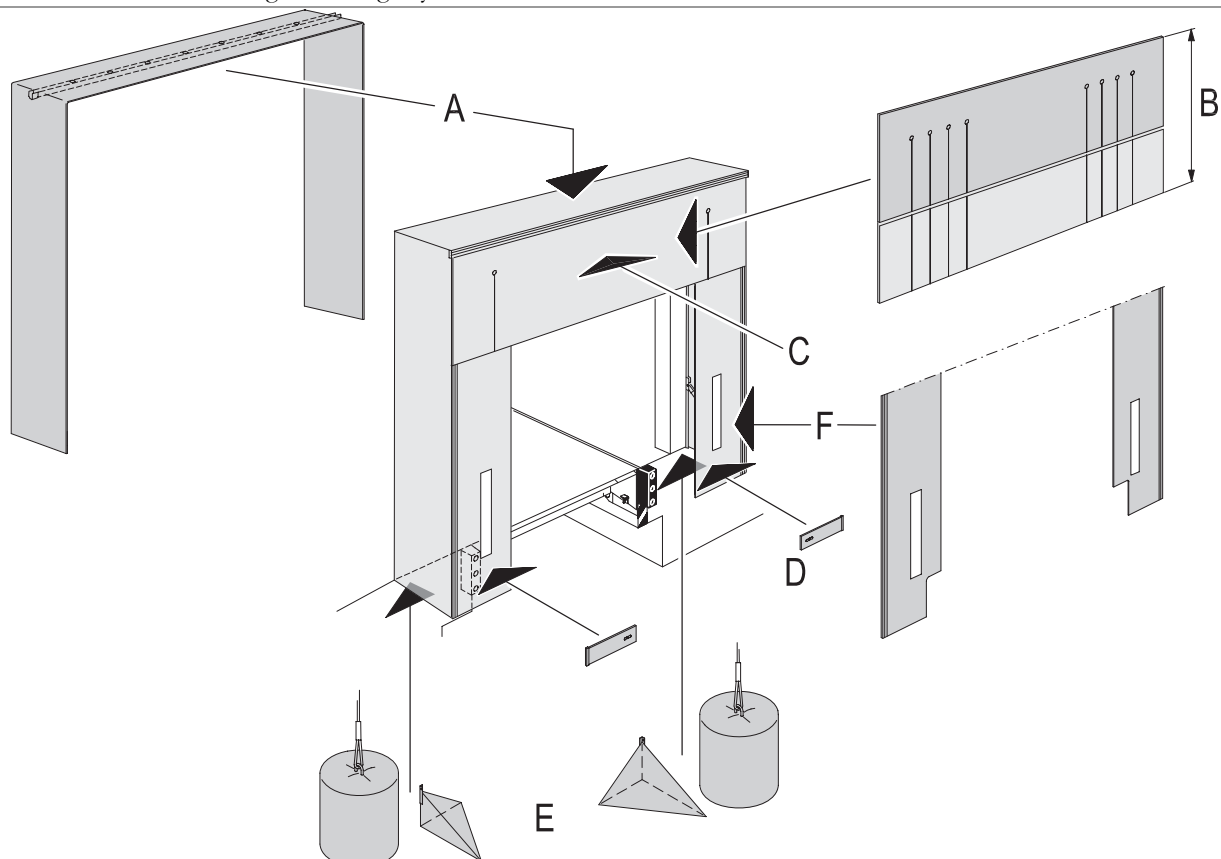
Triangle or round cushions covered with PVC curtain material in lower corners of the dock shelter.

- Minimization of draught from below during loading and unloading

F Notching on both sides

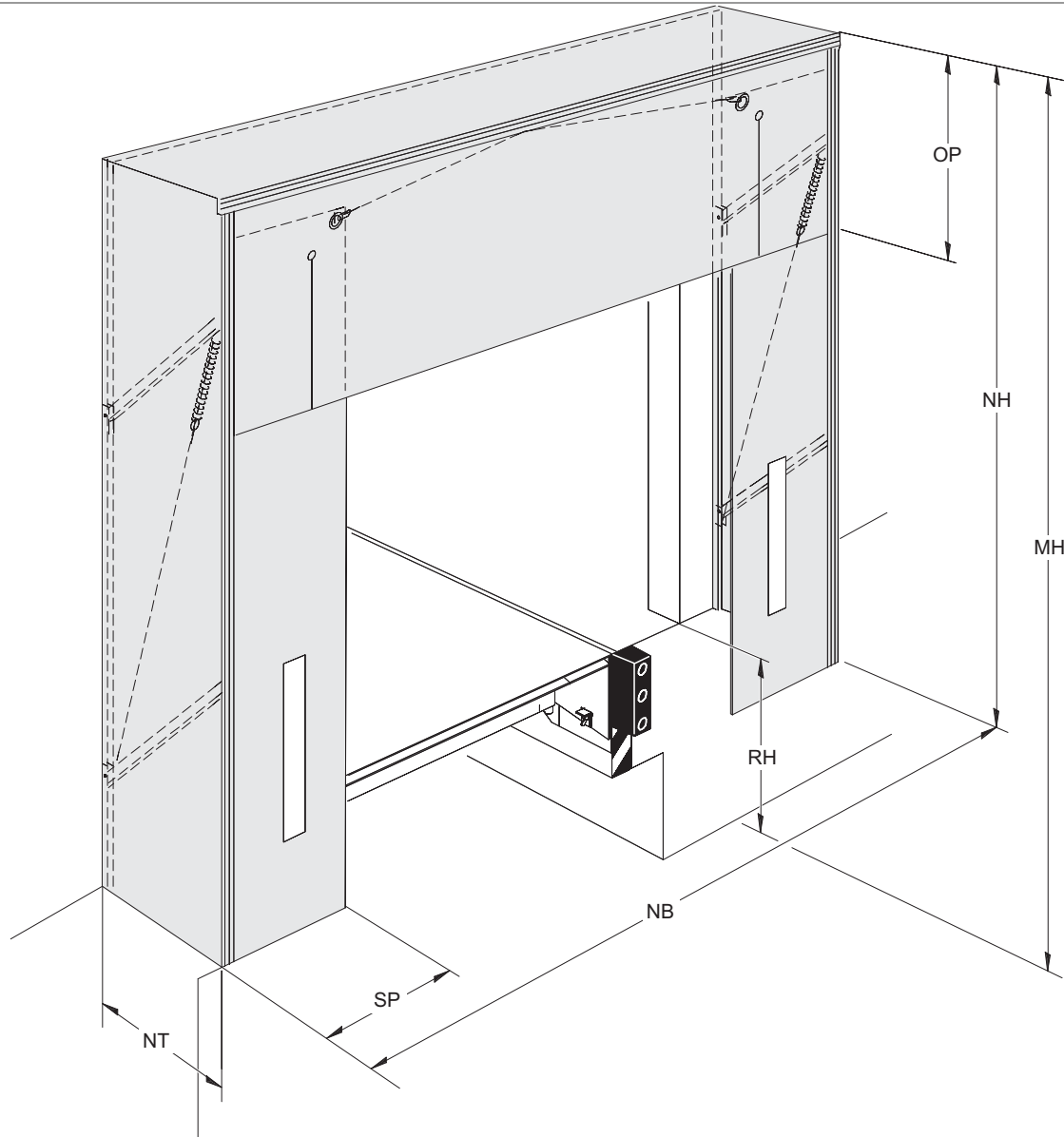
From factory a square of the lower corner front curtain is cut out.

- Avoid damaged front curtains due to the collision between vehicle and buffer.
- Recommended in combination with min. 140 mm deep buffers, like RB, EBH, EBF or steel spring buffer.



3. Specifications

3.1 Dimensions

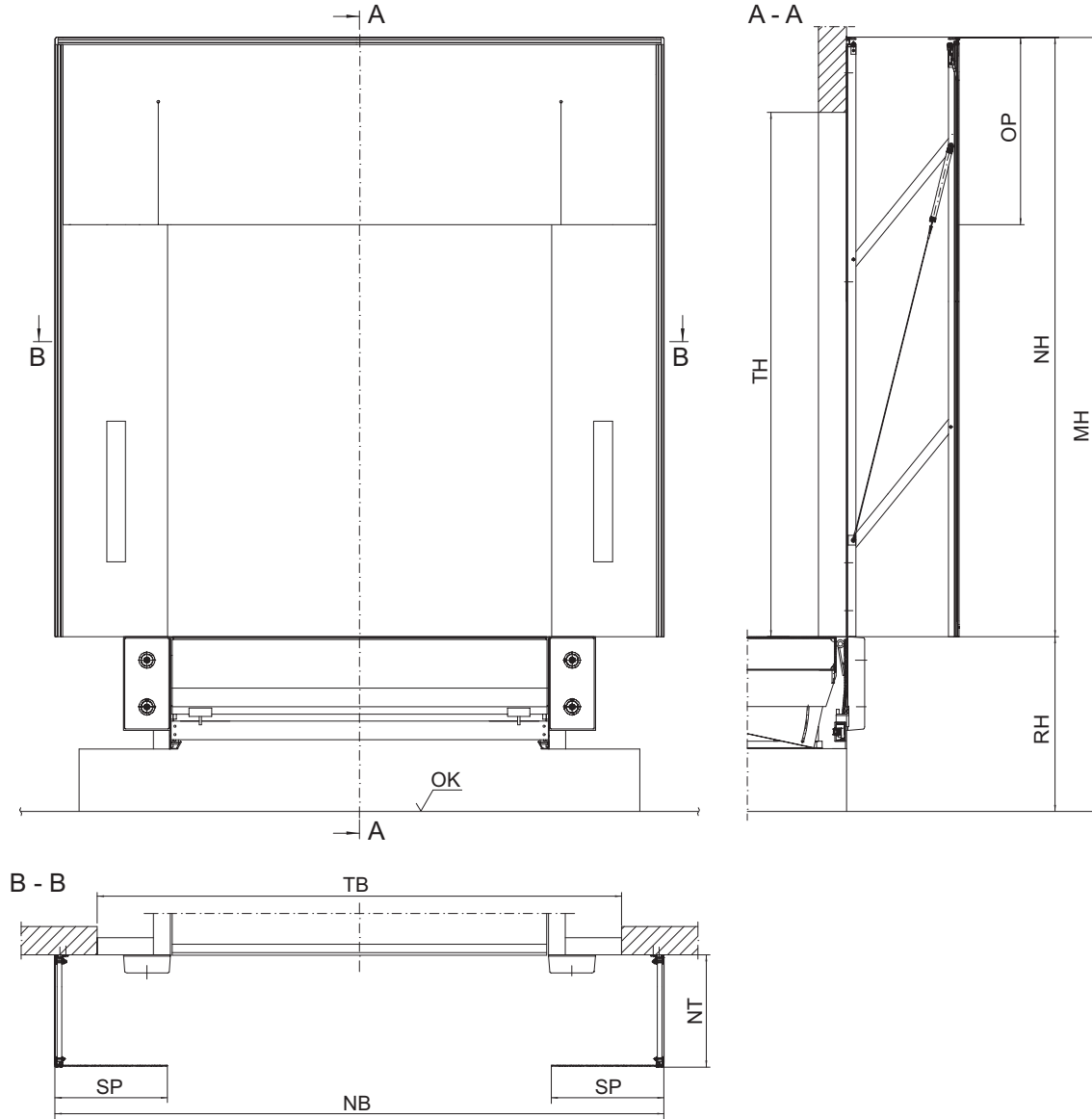


Q1.0 - 2009

Abb.	Dimension	Value (mm)
NB	Nominal width	3250, 3450
NH	Nominal height	3200, 3400, 3600
OP	Length of top curtain	1000, 1200
SP	Width of side curtain	600, 700
MH	Installation height	4500
NT	Nominal depth	600, 900
RH	Ramp height	

4. Construction

The Crawford 660 curtain shelter SME consists of a front and rear frame made of aluminium profiles which are connected to each other by bracing arms. The frame construction is covered on top and down the sides by a continuous textile reinforced cladding material.



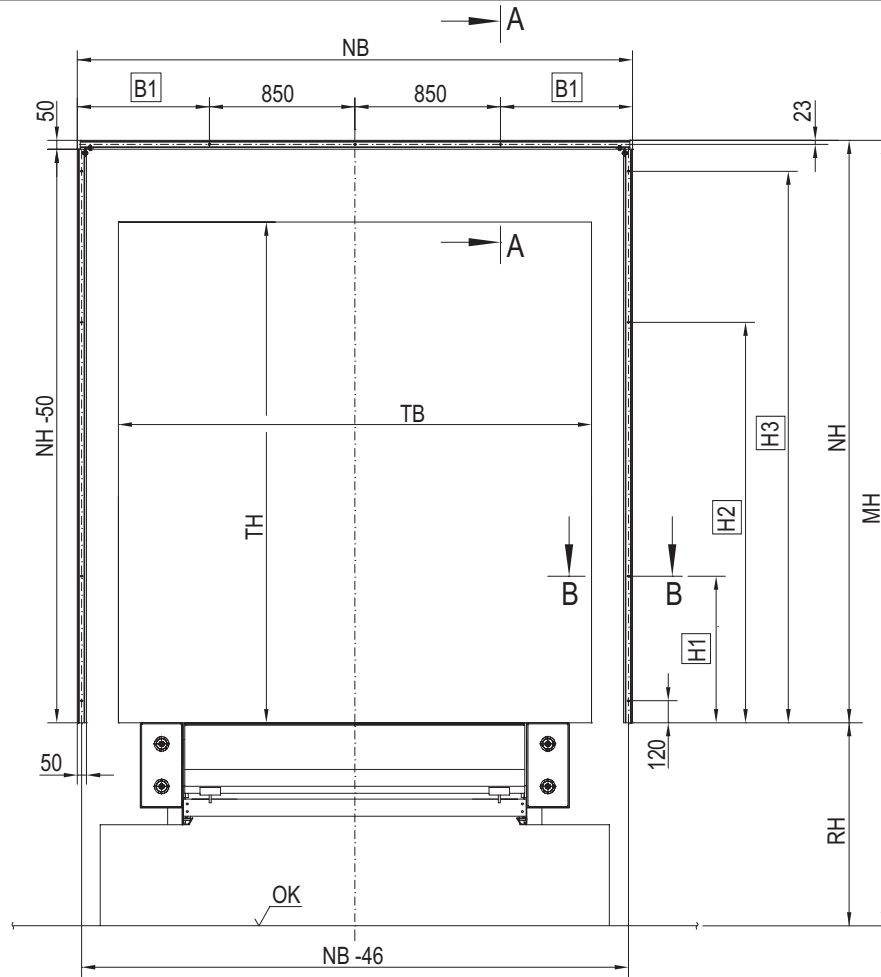
OK	Yard level
TH	Door height
OP	Top curtain
NH	Nominal height
MH	Installation height
RH	Dock height
TB	Door width
SP	Side curtain
NB	Nominal width
NT	Nominal depth

Q1.0 - 2009



5. Building and space requirements

5.1 Fixing points

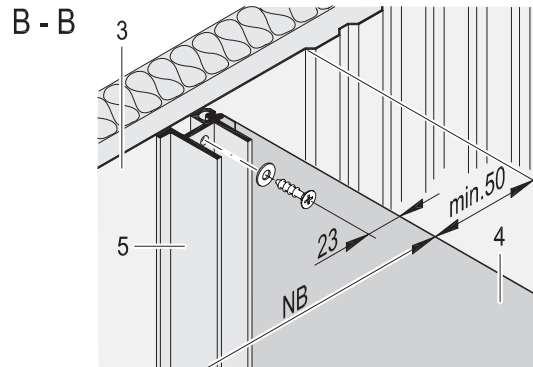
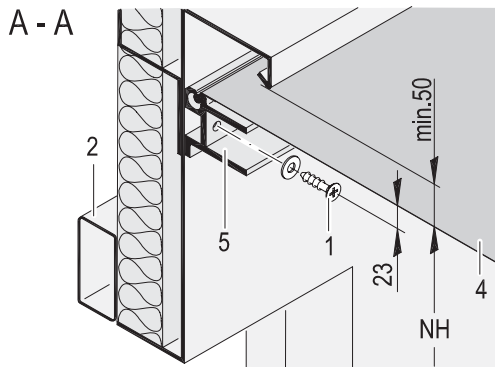


- OK Yard level
- TH Door height
- NH Nominal height
- MH Installation height
- RH Dock height
- TB Door width
- NT Nominal depth
- NB Nominal width

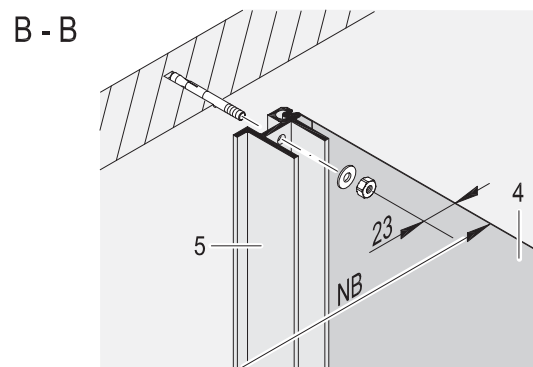
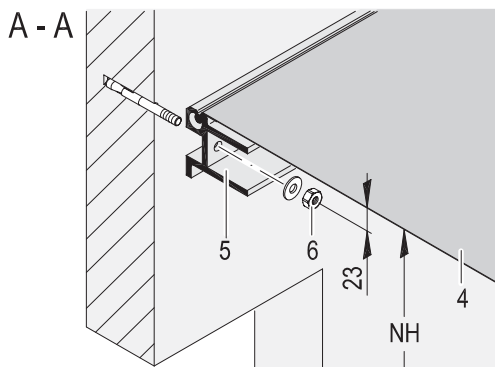
NB	NH	NT	B1	H1	H2	H3
3250	3200	600/900	775	395	1895	3030
	3400	600/900	775	495	1995	3230
	3600	600/900	775	595	2095	3430
3450	3200	600/900	875	395	1895	3030
	3400	600/900	875	495	1995	3230
	3600	600/900	875	595	2095	3430

5.2 Wall fixings

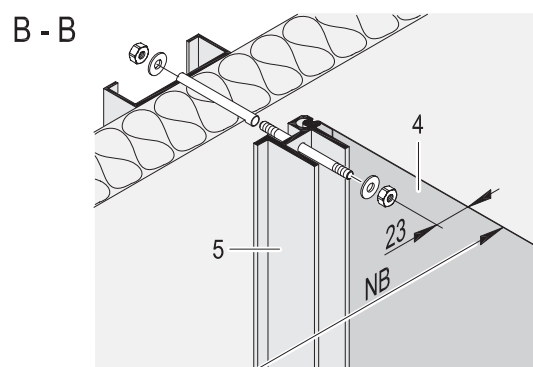
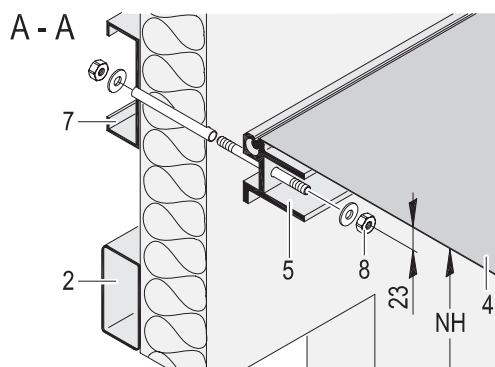
5.2.1 Cavity wall



5.2.2 Concrete wall



5.2.3 Insulated wall



- | | |
|--|--|
| 1 | Self-tapping screw |
| 2 | Door mounting frame rectangular tube 80x40x2 |
| 3 | Sheet metal 3 mm thick |
| 4 | Roof cover |
| 5 | Extruded aluminium section - rear frame |
| 6 | Expansion bolt |
| 7 | Mounting frame for dock shelter, 120x40x15x3 |
| 8 | Threaded bolt with nut, washer and spacer tube |
| 2, 3, 7 are not included in installation price | |

Q1.0 - 2009

6. Service



These keys open doors to better business

Regardless of their function, age or manufacturer, your industrial doors and dock loading systems have an important role in the flow of your business. That's why it makes sense to plan their maintenance long before the need for service occurs.

A Key Customer Service agreement from Crawford is your best assurance of safe and trouble-free door and dock operation. By becoming a key customer, you not only reduce the risk of breakdowns, but also guarantee compliance with local regulations and the new harmonised EU standards. You also ensure that your doors and dock loading systems retain their classifications for wind load, air permeability, water penetration and more.

Four types of Key Customer Service agreement – Green, Yellow, Blue and Red – allow us to tailor our service to your specific needs. Based on the role of your doors and dock loading systems, and the intensity with which you use them, you receive service that provides the perfect balance of economy, safety and security.

Best of all, the maintenance is performed by Crawford's renowned team of service technicians. As a qualified specialist in industrial doors and dock loading systems, we have the knowledge and skills to service any door or dock, regardless of its type, age or manufacturer. With Crawford as a single source for all your door and docking equipment brands, you can easily reduce costs while increasing equipment availability.

Q1.0 - 2009

7. Index

A

Application 5

B

Building and space requirements
..... 10

C

Cavity wall 11
Concrete wall 11
Construction 9
Continuous roof cover iii
Copyright and Disclaimer Notice
..... ii

D

Description 5
Description of available options 6
Dimensions 8

F

Features iii
Fixing points 10

I

Insulated wall 11

M

Mode of operation 5

O

Options 5
Overview 5

P

Performance iii

S

Service 13
Specifications 8
Standard 5

T

Technical facts iii
Top and side curtains iii

W

Wall fixings 11

Crawford is a leading international provider of door and logistics solutions. The carefully selected programme of doors and dock loading equipment, combined with profound application know-how and an unparalleled service offering, is the reason why more than a million customers have chosen Crawford as the preferred supplier for trouble-free operation around the clock.

