

Crawford
671 Inflatable shelter SIR

Product datasheet



Q4.0 - 2009

Copyright and Disclaimer Notice

Although the contents of this publication have been compiled with the greatest possible care, Crawford cannot accept liability for any damage that might arise from errors or omissions in this publication. We reserve the right to make appropriate technical modifications/replacements without prior notice.
No rights can be derived from the contents of this document.

Colour guides: Colour differences may occur due to different printing methods.

Crawford®, Megadoor®, hafa®, EconoRoll®, MobiGuard® and MobiOpener® are registered trademarks owned by Crawford.

Copyright © 2006-2009 Crawford

No part of this publication may be copied or published by means of printing, photocopying, microfilm or any other process whatsoever without prior permission in writing by Crawford.

All rights reserved

Technical facts

1.1 Features

Sizes: - nominal height	4055, 4355, 4555 mm
Sizes - nominal width	3600 mm
Sizes - nominal depth	770 mm
Sizes - side bag extension	650 mm
Sizes - top curtain extension	2200 mm
Sizes - Free height above level	3600, 3900, 4100 mm
Standard colour	RAL 9010 outside / RAL 7032 inside
Control unit	Switch control

1.2 Performance

Walls	Insulated panel 40 mm Outside white RAL 9010 Inside white RAL 7032 Intermediate walls with multiple module double sided grey RAL 7032
Roof	Insulated panel 40 mm Outside white RAL 9010 Inside grey RAL 7032
Cover plate roof / wall	White RAL 9010
Front plate	Steel sheet painted white RAL 9010 with reinforcement angle
Surface treatment	Hot galvanised and painted with polyester paint, which corresponds to environmental class 3
Front protection	Yellow polyethene plastic
Fabric quality	Top curtain: PVC coated polyester fabric 650 g/m ² , thickness 0,6 mm Side bag: PVC coated polyester fabric 680 g/m ² , thickness 3 mm Option wear shield: PVC coated polyester fabric 3400 g/m ² , thickness 3 mm
Fan	230 V, 1-phase, 50 Hz, 250 W Noise niveau: 65 dBA in working position
Operating	Switch control included. Other controls available as option
Temperature range	-30° to +60°

Contents

Copyright and Disclaimer Notice	ii
<hr/>	
Technical facts	iii
<hr/>	
1.1 Features	iii
1.2 Performance	iii
2. Description	5
<hr/>	
2.1 Application	5
2.2 Mode of operation	5
2.3 Overview	5
2.4 Standard	6
2.5 Options	6
2.5.1 Option wear shield.....	6
3. Specifications.....	7
<hr/>	
3.1 Dimensions	7
4. Construction	8
<hr/>	
4.1 Construction views.....	8
5. Building and space requirements.....	9
<hr/>	
5.1 Wall fixings.....	9
5.1.1 Heavy concrete wall	9
5.1.2 Light concrete wall.....	9
5.1.3 Insulated wall	9
5.1.4 Cavity wall.....	10
5.1.5 Steel guard.....	10
5.2 Fixing points	11
5.2.1 Fixing points regular	11
5.2.2 Fixing points with u-profile	12
6. Service.....	13
<hr/>	
These keys open doors to better business.....	13
7. Index.....	14
<hr/>	

2. Description

2.1 Application

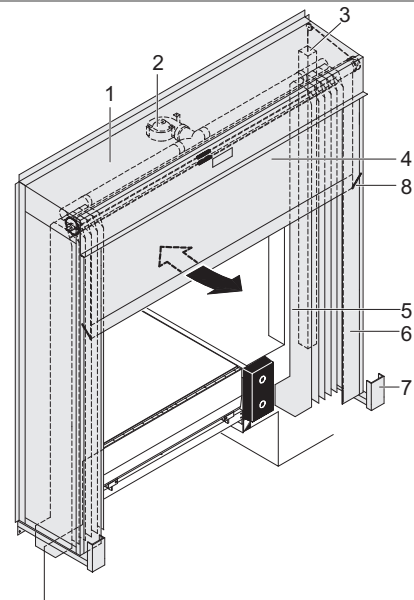
The handling of cooled or frozen food put high demands on the temperature chain. The Crawford 671 inflatable shelter SIR provides the optimal sealing of temperature controlled premises during the loading and unloading process. Contrary to other types of dock shelters, the vehicle does not push towards the shelter. Instead, the shelter is air inflated around the docked vehicle, providing complete sealing. The Crawford 671 inflatable shelter SIR is suitable for all vehicle sizes and its sealing capacity exceeds by far the standard normally required by the operators.

2.2 Mode of operation

When a vehicle is positioned at the docking station, the Crawford 671 inflatable shelter SIR is activated by the control unit. The side bags inflate. The top part is a roller curtain. A unique balancing system makes the top roller curtain "free floating" when the vehicle is docked to the dock shelter.

During loading/unloading the vehicle moves up and down and the top roller curtain automatically follows these movements, without starting the roller curtain machinery. The roller guidance design includes a unique Break-Away system to follow horizontal movements. In rest position the bags are held in place mechanically.

2.3 Overview



- | | |
|---|-------------------|
| 1 | Insulated panels |
| 2 | Blower |
| 3 | Counter balance |
| 4 | Top bag |
| 5 | Side bag |
| 6 | Curtain strips |
| 7 | Steel guard |
| 8 | Break-Away system |

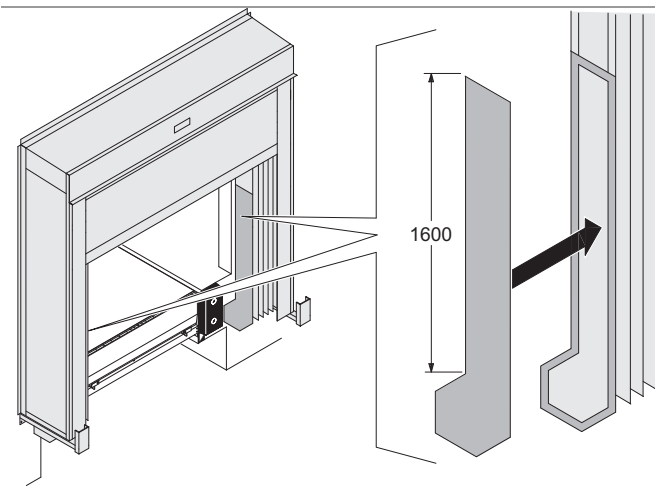
2.4 Standard

Nominal height	4055, 4355, 4555 mm	
Nominal width	3600 mm	
Nominal depth	770 mm	
Top curtain extension	2200 mm	
Side bag extension	650 mm	
Insulated panel	40 mm	
Operating	Switch control	
Standard colour	Insulated panel	RAL 9010 outside RAL 7032 inside RAL 9010
	Front plate	
Steel guard combi		
Dock shelter is prepared for installation to wall or Load House.		

2.5 Options

Front plate	Digit on front plate
Side bags	Wear shields
Colour	Insulated panel in special colour Front plate in special colour
Wall fixings	Concrete, steel, insulated panel, light concrete, Load House

2.5.1 Option wear shield



Extra layer of 3 mm PVC curtain mounted to side bags by VELCRO tape to cover the lowest part left and right in the vehicle contact area. When the vehicle moves up and down during loading/unloading the side bags are protected against damages.

3. Specifications

3.1 Dimensions

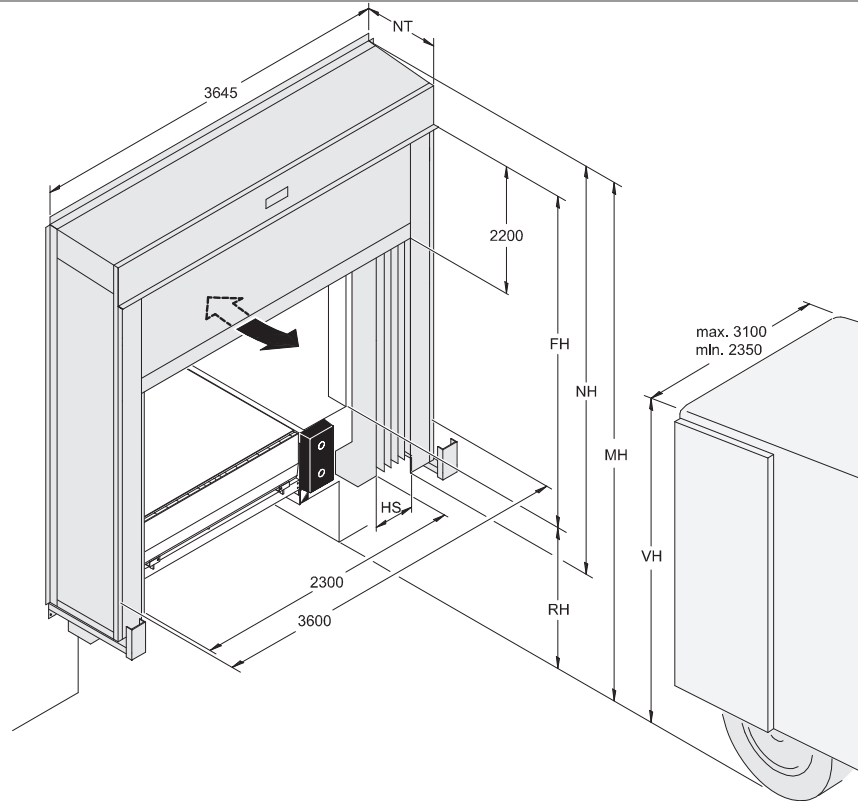


Abb.	Dimension	Value (mm)
NB	Nominal width	3600
NH	Nominal height	4055, 4355, 4555
FH	Free height above level*	3600, 3900, 4100**
OP	Top curtain travel	2200
NT	Nominal depth	770
RH	Dock height	

* depending on MH (installation height)

** maximum sizes

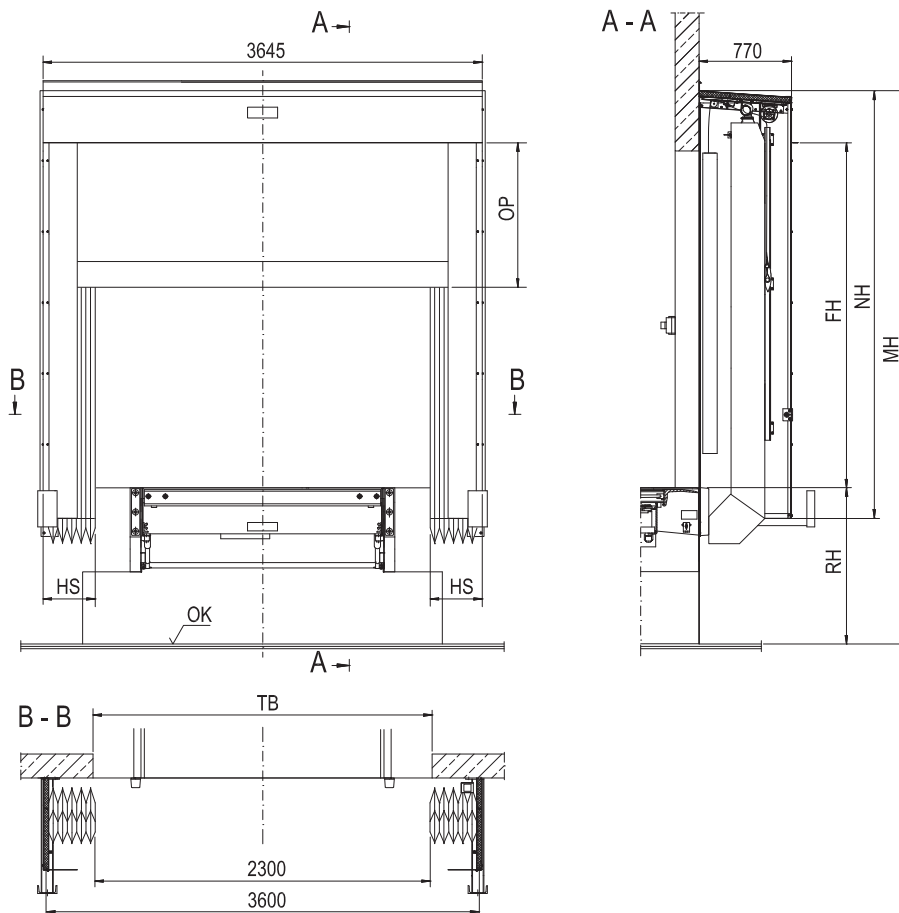
Q4.0 - 2009

4. Construction

The Crawford 671 inflatable shelter SIR can be fitted directly to the wall or on a Load House and is available as a single module or multiple modules. The Crawford 671 inflatable shelter SIR consists of two side walls with bags one side wall for multiple module), front protections and installation material. Roof with top bag, front plate, machinery, fan and installation brackets. The Crawford 671 inflatable shelter SIR is operated from a control panel and the supply contains the the complete dock shelter including necessary fixings.

A spring tension device minimises the risk of damages from vehicles hitting the structure during docking manoeuvres. The Crawford 671 inflatable shelter SIR is designed to provide the best seal possible around the vehicle.

4.1 Construction views

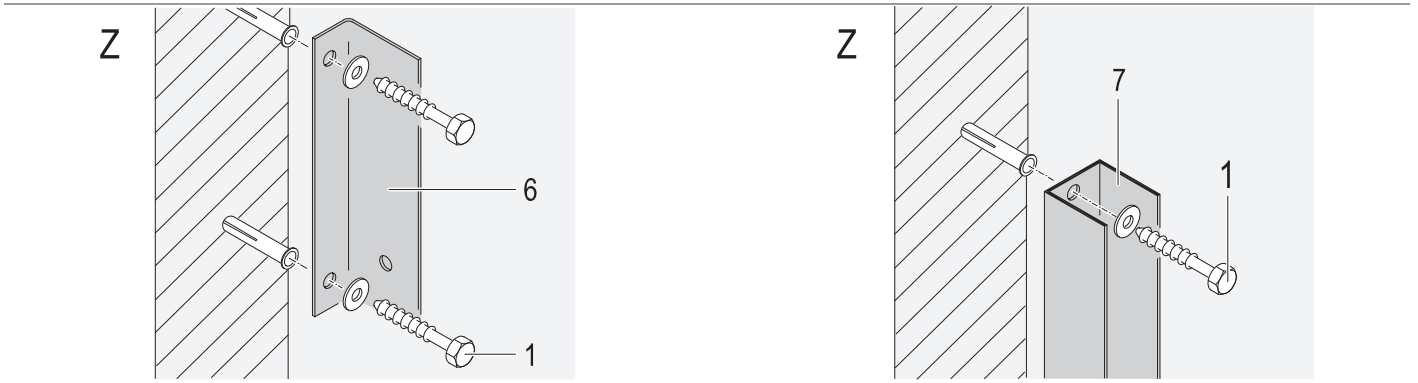


OK	Yard level
TB	Door width
NH	Nominal height
RH	Dock height
LB	Clear width
OP	Top curtain travel (OP = 2200 mm)
HS	Side bag extension
NT	Nominal depth
NB	Nominal width
FH	max. free height above dock level (depending on MH)
MH	Installation height (VH=500 mm)

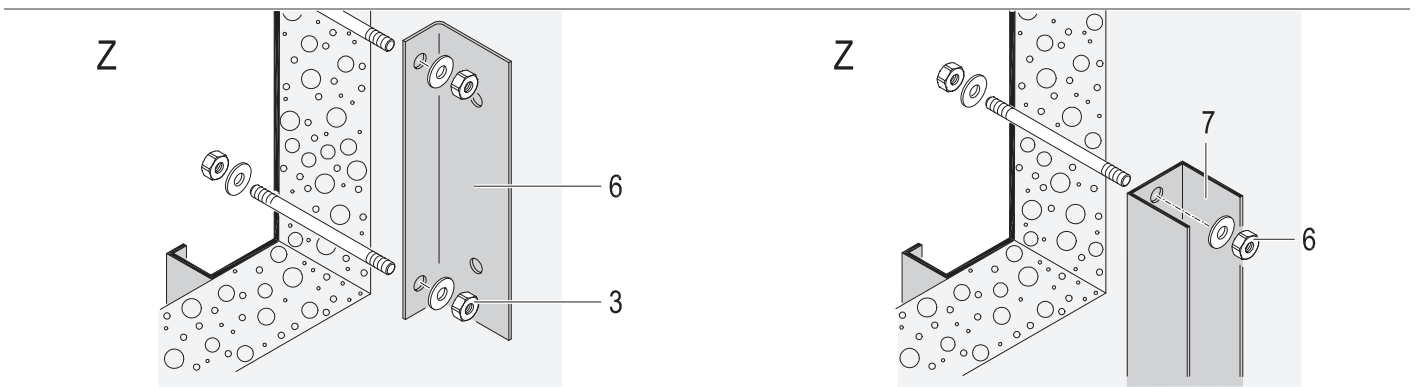
5. Building and space requirements

5.1 Wall fixings

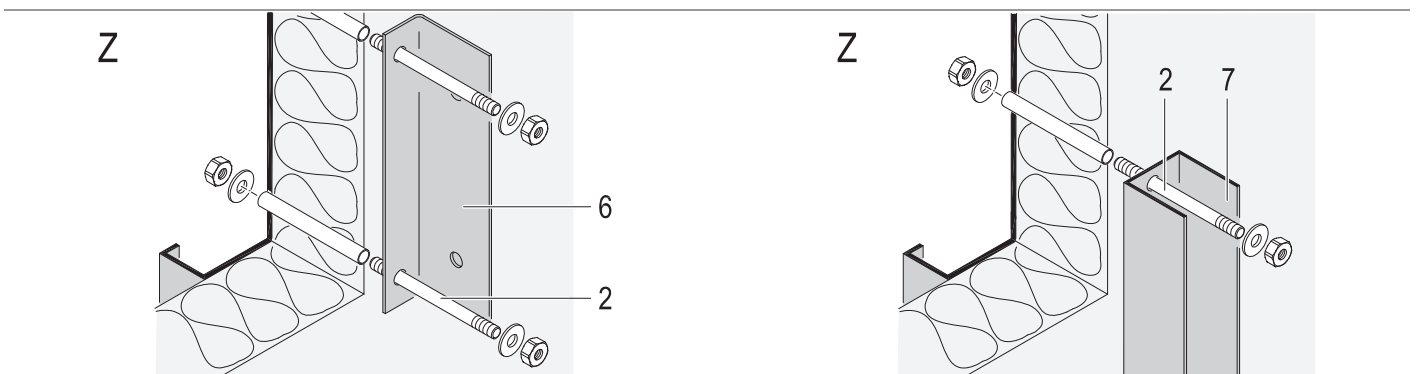
5.1.1 Heavy concrete wall



5.1.2 Light concrete wall

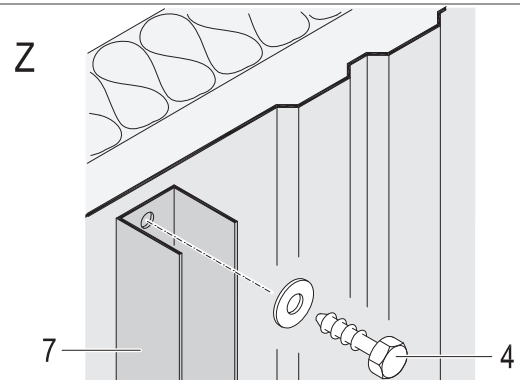
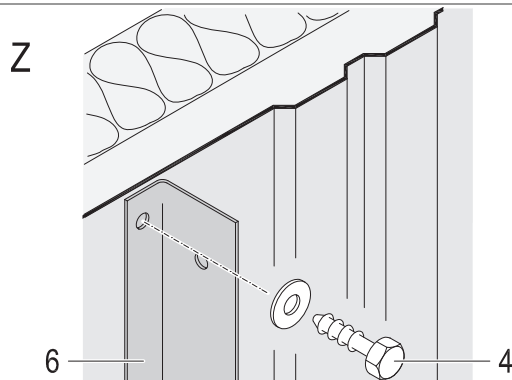


5.1.3 Insulated wall

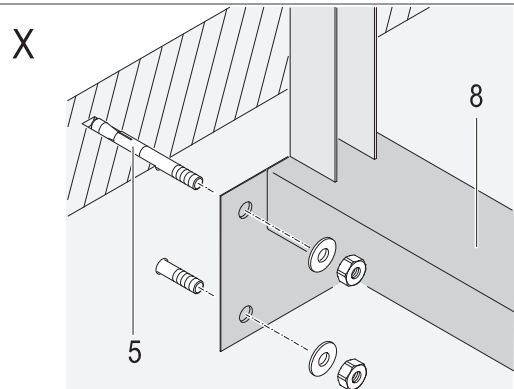
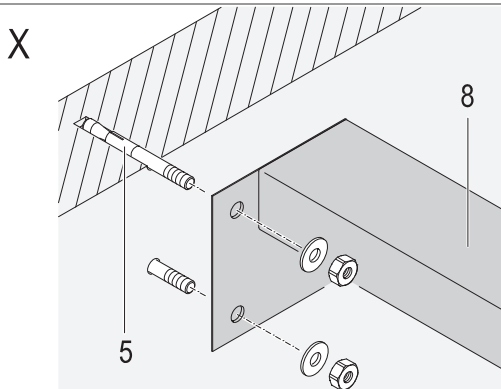


Q4.0 - 2009

5.1.4 Cavity wall



5.1.5 Steel guard



1	Screw with dowel 8x60
2	Threaded bolt with nut and washer**
3	Hexagonal nut with washer
4	Self tapered screw 8x32
5	Heavy duty bolt M12 **
6	Support bracket **
7	U-profile 45x40x1
8	Steel guard

* by others, not included in the delivery

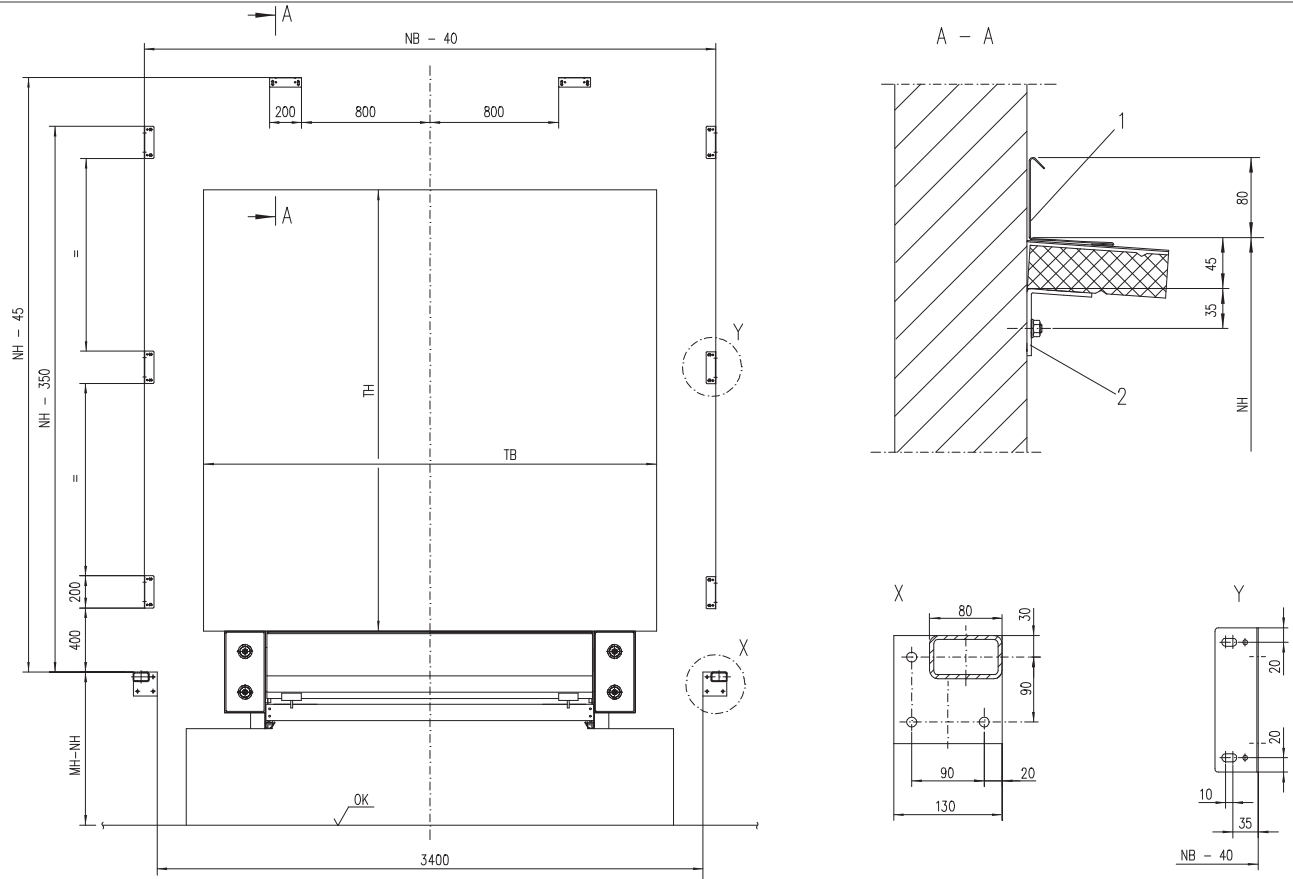
** belong to the wall fixing

Note!

The wall surface at the installation point, NH + 150 mm (measured from the top edge of the impact bar) and NB + 100 mm, should be smooth and flat. The same applies for the fixing of the impact bar.

5.2 Fixing points

5.2.1 Fixing points regular



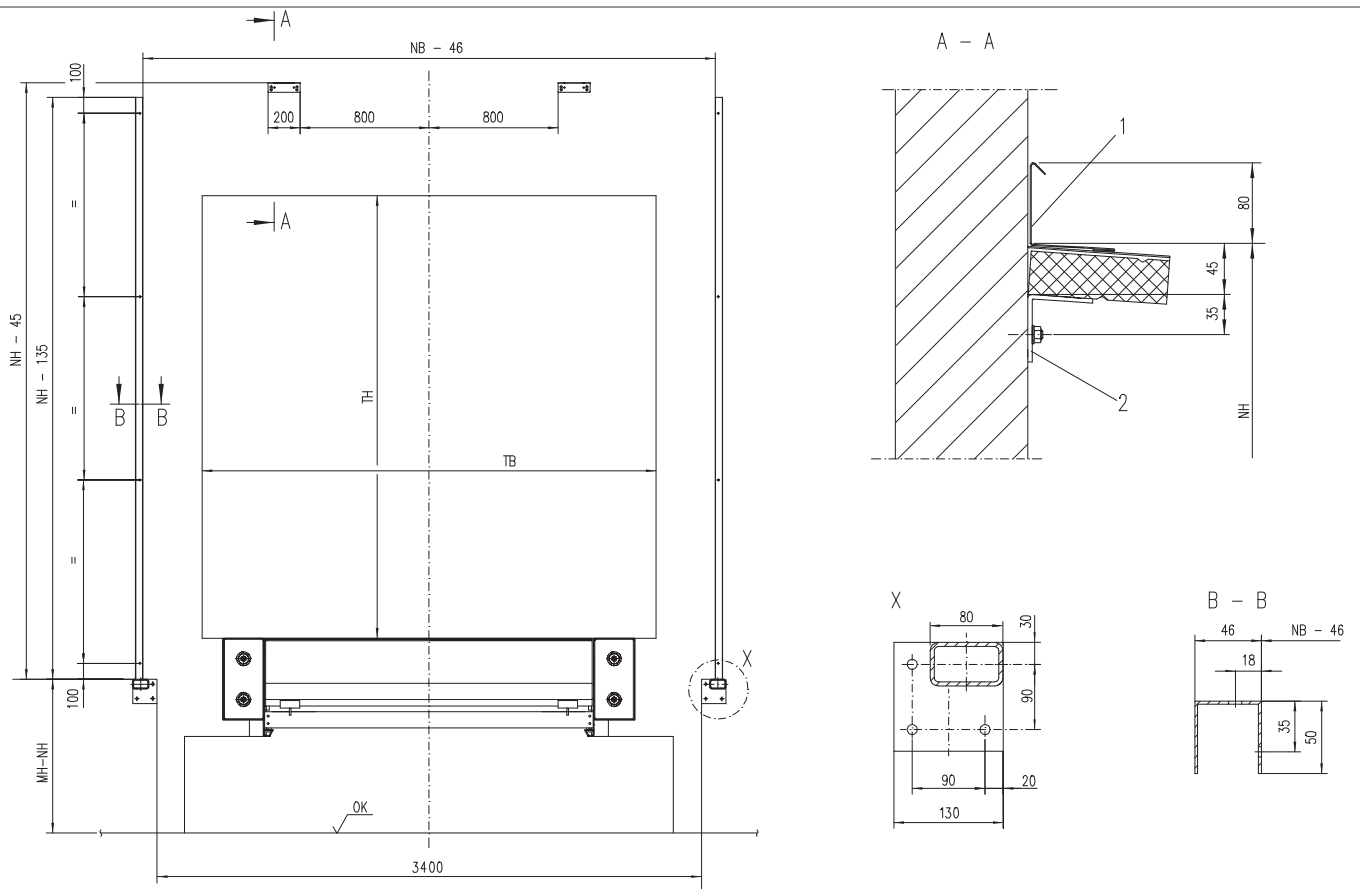
2 Wall mounting profile*

3 Support bracket*

* belong to the wall fixing

Q4.0 - 2009

5.2.2 Fixing points with u-profile



- 2 Wall mounting profile*
- 3 Support bracket*

* belong to the wall fixing

Q4.0 - 2009

6. Service



These keys open doors to better business

Regardless of their function, age or manufacturer, your industrial doors and dock loading systems have an important role in the flow of your business. That's why it makes sense to plan their maintenance long before the need for service occurs.

A Key Customer Service agreement from Crawford is your best assurance of safe and trouble-free door and dock operation. By becoming a key customer, you not only reduce the risk of breakdowns, but also guarantee compliance with local regulations and the new harmonised EU standards. You also ensure that your doors and dock loading systems retain their classifications for wind load, air permeability, water penetration and more.

Four types of Key Customer Service agreement – Green, Yellow, Blue and Red – allow us to tailor our service to your specific needs. Based on the role of your doors and dock loading systems, and the intensity with which you use them, you receive service that provides the perfect balance of economy, safety and security.

Best of all, the maintenance is performed by Crawford's renowned team of service technicians. As a qualified specialist in industrial doors and dock loading systems, we have the knowledge and skills to service any door or dock, regardless of its type, age or manufacturer. With Crawford as a single source for all your door and docking equipment brands, you can easily reduce costs while increasing equipment availability.

Q4.0 - 2009

7. Index

A

Application5

B

Building and space requirements
..... 10

C

Cavity wall..... 11
Construction.....8
Construction views.....8
Copyright and Disclaimer Notice
..... ii

D

Description5
Dimensions7

F

Features..... iii
Fixing points..... 13
Fixing points regular..... 13
Fixing points with u-profile 14

H

Heavy concrete wall..... 11

I

Insulated wall 11

L

Light concrete wall 11

M

Mode of operation5

O

Option wear shield5
Options5
Overview.....5

P

Performance iii

S

Service..... 15
Specifications.....7
Standard5
Steel guard 12

T

Technical facts..... iii

W

Wall fixings11

Crawford is a leading ASSA ABLOY brand focusing on automated entrance solutions for efficient movement of vehicles and goods. With a complete portfolio of door and docking solutions, an extensive service offer and professional advice, we help customers ensure convenient, safe, secure and energy saving operations around-the-clock.

Crawford is represented in more than 30 countries and is part of ASSA ABLOY Entrance Systems, which also includes the globally recognized Megadoor and Besam brands.

www.crawfordsolutions.com

